

Board of Trustees Retreat

FUTURES: A Blueprint for the Future and Peer Comparisons

Chancellor's Report

July 9, 2010



North Carolina Agricultural and Technical State University

Explore. Discover. Become.



Futures

1. Planning for *FUTURES* announced to the campus in January 2001
2. Planning and Resource Council appointed - 23 members
3. Scan teams appointed to study the environment:
 - Internal Scan Team
 - External Scan Team
 - Values Team





Futures

4. 3 Scenarios proposed from campus discussions
5. Several Town Hall Meetings
6. Campus-wide Retreat April, 2001
 - *Interdisciplinary University*





The Interdisciplinary University

Proposed to build upon a solid foundation in academic programs:

- Programs work together towards curriculum innovation that builds on connections across the disciplines.
- Working across programs nurtures a learning environment where opportunities to build solutions are based upon expertise in more than one discipline.
- Teaching focuses on the ability to organize, apply, assess and create interdisciplinary knowledge.





Futures

The Interdisciplinary University

THE VISION

North Carolina A&T is a learner-centered community that develops and preserves intellectual capital through interdisciplinary learning, discovery, engagement and operational excellence.





The Themes

- Distinctive, Visionary Interdisciplinary Programs
- Strategic Partnerships
- Globalization
- Enhanced and Diversified Resources
- Responsive Learning Environment





Why Interdisciplinary?

The Interdisciplinary University

- Responds to societal and intellectual issues that require new solutions
- Creates a learning environment that allows students to become productive and globally informed citizens of the 21st Century





The Defined Aspiration

- To be the premier interdisciplinary university in North Carolina and America
- Building on our comparative advantages
 - Engineering
 - Technology
 - Business
 - A strong civil rights legacy
 - Status as an 1890 land-grant institution





Five Strategic Goals

1. Establish a Transformation Taskforce.
2. Deliver visionary and distinctive interdisciplinary academic studies, research and service including global collaborations and partnerships.
3. Create a responsive learning environment supported by an efficient integrated administrative system.
4. Provide easily accessible, high quality student services in an enhanced learning environment that recognizes and responds to diverse needs served by accountable student services personnel.
5. Enhance and diversity the University's resource base through effective fundraising and entrepreneurial initiatives.





Strategy

- Ongoing refinement of the scenario
- Ongoing refinement of goals that support the scenario
- Goal implementation teams appointed
- Funds re-allocate to support the implementation of goals





FUTURES Accomplishments

January 2002



Established a venture capital fund for promising interdisciplinary initiatives. The Chancellor established a Ventures Fund of \$250,000 in January 2002. Faculty, staff, students and alumni submitted 107 proposals for a maximum of \$15,000 per award.





FUTURES Accomplishments (cont'd.)

October 2002



- Implemented a plan to expand focused giving and investment activities through a capital campaign.
- Implemented a marketing plan to support the capital campaign. *News & Record* rating of Aggie comic strips as second most-read feature in the Sunday edition. Awards won.





FUTURES Accomplishments (cont'd.)

August 2003



- Implemented a “Text in Community” series. Committee of faculty and staff select a book for the community to read during the academic year.
- Completed the review of existing academic and research centers and prepared for implementation of a new General Education Core Curriculum.





FUTURES Accomplishments (cont'd.)

August 2003 (cont'd.)



The *Aggie Pride Compact* that reflects the university's core values was incorporated into Freshman Orientation and university initiatives.





FUTURES Accomplishments (cont'd.)

December 2003



Implemented a marketing program that brands the university's initiative. New themes included the new *Aggie bulldog* and *A&T logos*.





FUTURES Accomplishments (cont'd.)

August 2004



Established entrepreneurial programs and partnerships that fostered growth opportunities for long-term funding initiatives, including:

- Middle College
- International Civil Rights Museum
- Nussbaum Center
- Millennium Campus





FUTURES Accomplishments (cont'd.)

August 2005



Surpassed the previously established enrollment goal of 10,000 students.





FUTURES Accomplishments (cont'd.)

August 2006



Instituted at least one interdisciplinary doctoral degree program.





Impact Trends *Futures* (2001-2009)

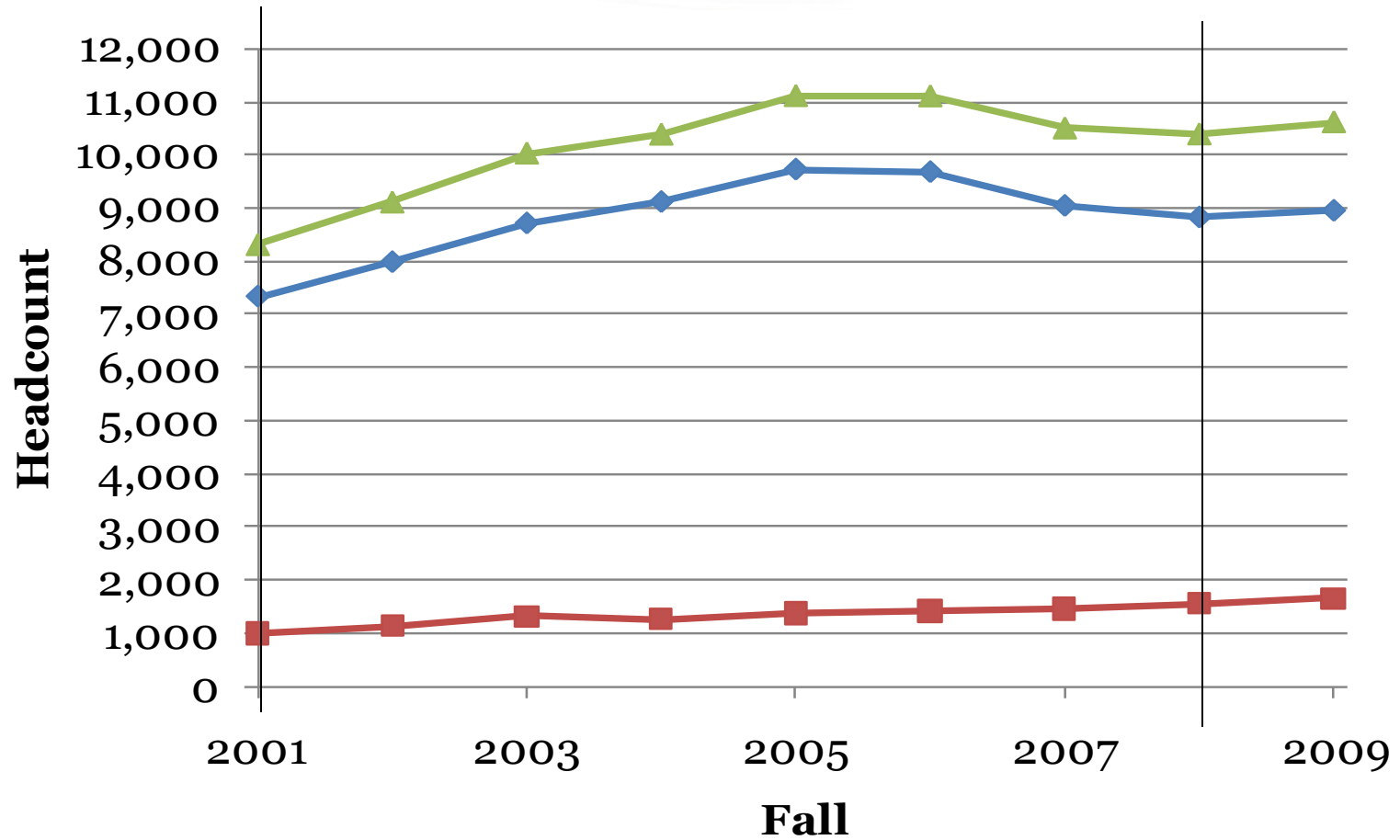


Fall Enrollment Growth



*Futures
Initiated*

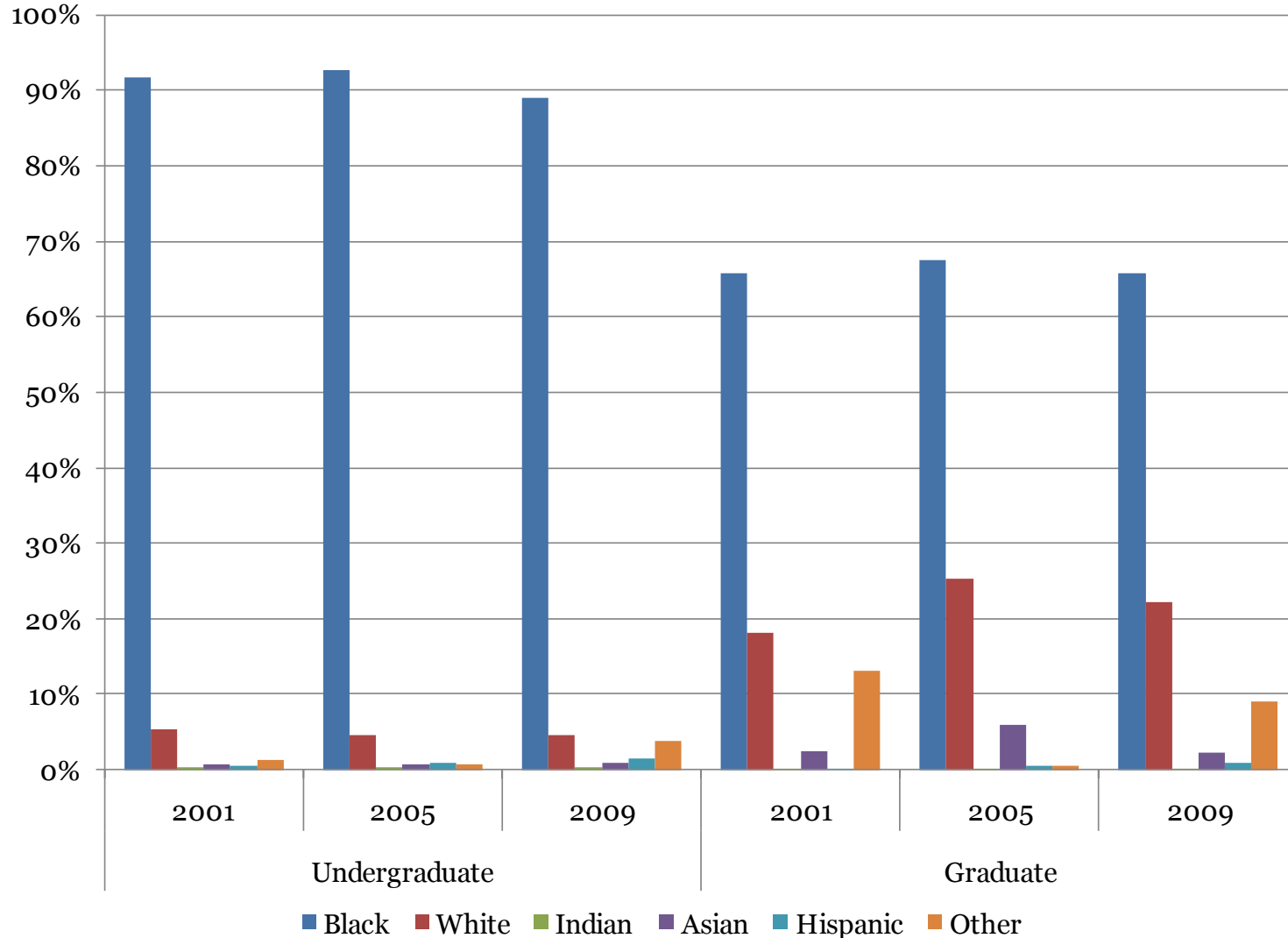
Futures ...



◆ Undergraduate ■ Graduate ▲ Total

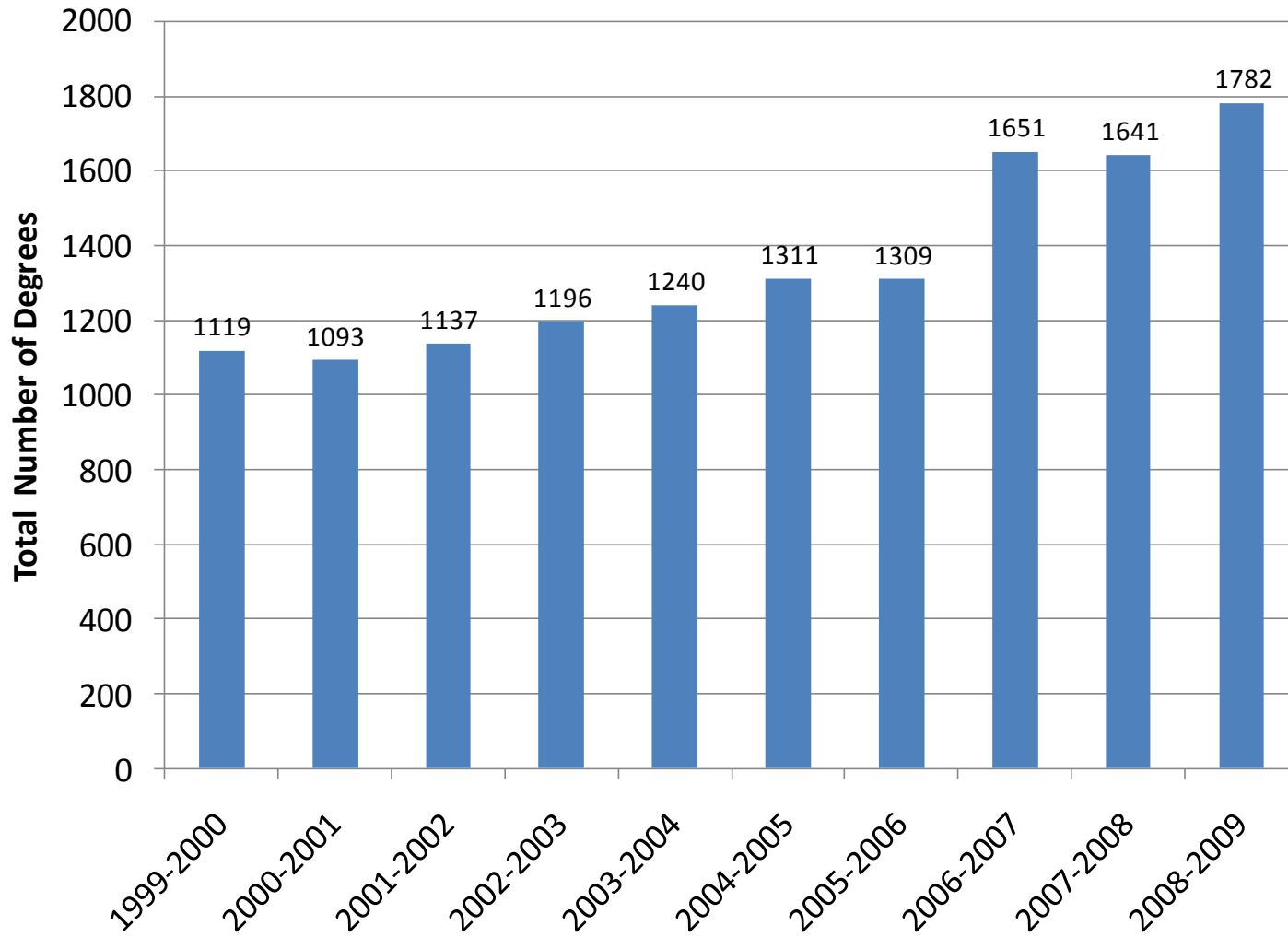


Diversity (2001-2009)



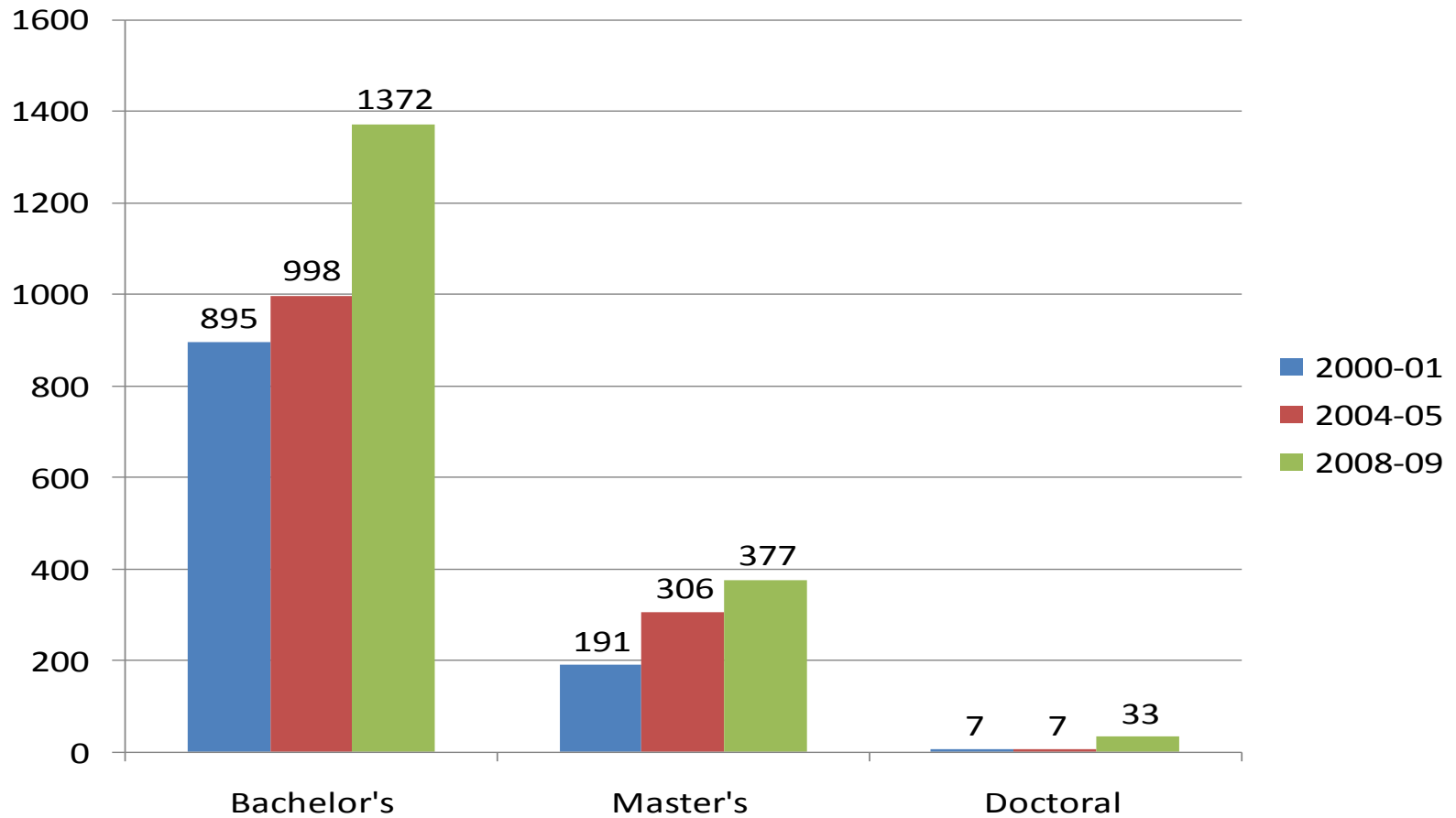


Degree Production 2000-2009





Degree Production 2000-2009





New Degree Programs

15 New Degree Programs since 2000

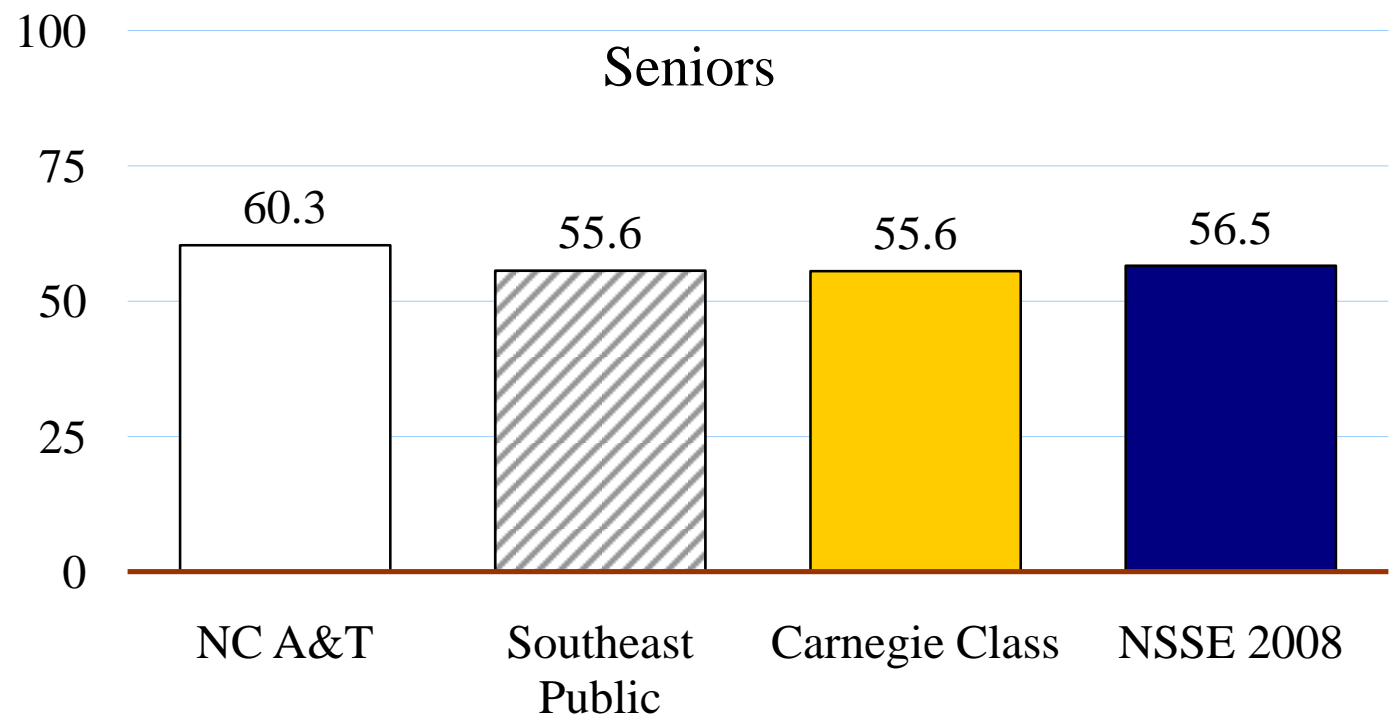
- **7 Bachelor's Degree Programs**
 - » Geomatics
 - » Criminal Justice
 - » Liberal Studies
 - » Comprehensive Science
 - » Reorganization secondary education programs
 - » Atmospheric Sciences and Meteorology
 - » Sports and Fitness Management
- **5 Master's Degree Programs**
 - » Information Technology
 - » Computational Science and Engineering
 - » School Administration
 - » Masters of Arts in Teaching
 - » Reading Education
- **3 Ph.D. Degree Programs**
 - » Computational Science and Engineering
 - » Leadership Studies
 - » Energy and Environmental Systems





National Survey of Student Engagement (NSSE) Multi-year Look at Seniors

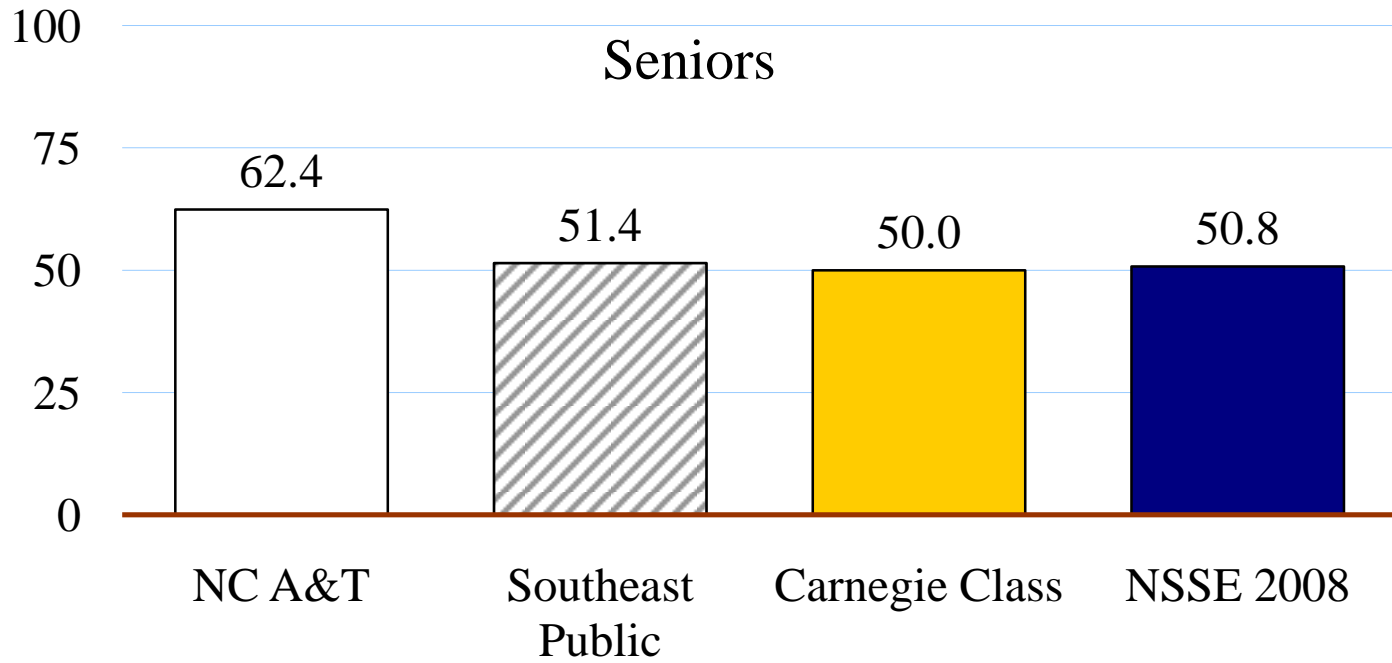
Level of Academic Challenge - Challenging intellectual and creative work is central to student learning and collegiate quality. Colleges and universities promote high levels of student achievement by emphasizing the importance of academic effort and setting high expectations for student performance.





National Survey of Student Engagement (NSSE) Multi-year Look at Seniors

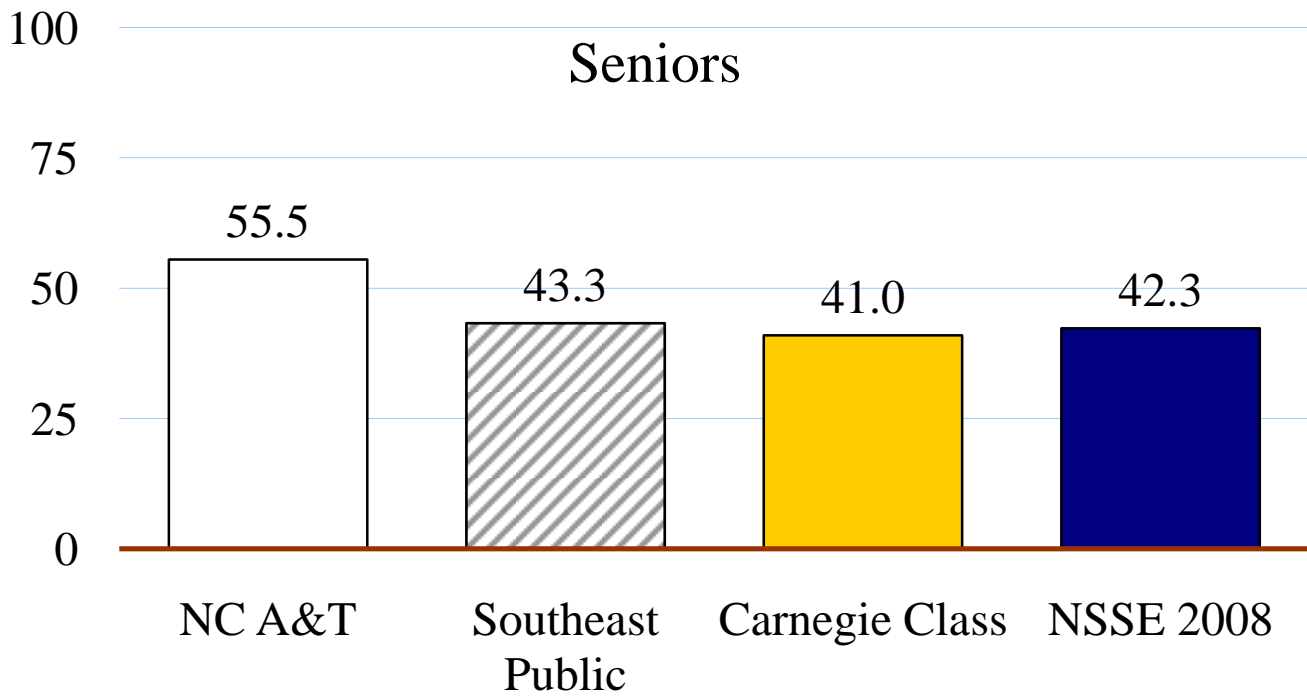
Active and Collaborative Learning - Students learn more when they are intensely involved in their education and asked to think about what they are learning in different settings. Collaborating with others in solving problems or mastering difficult material prepares students for the messy, unscripted problems they will encounter daily during and after college.





National Survey of Student Engagement (NSSE) Multi-year Look at Seniors

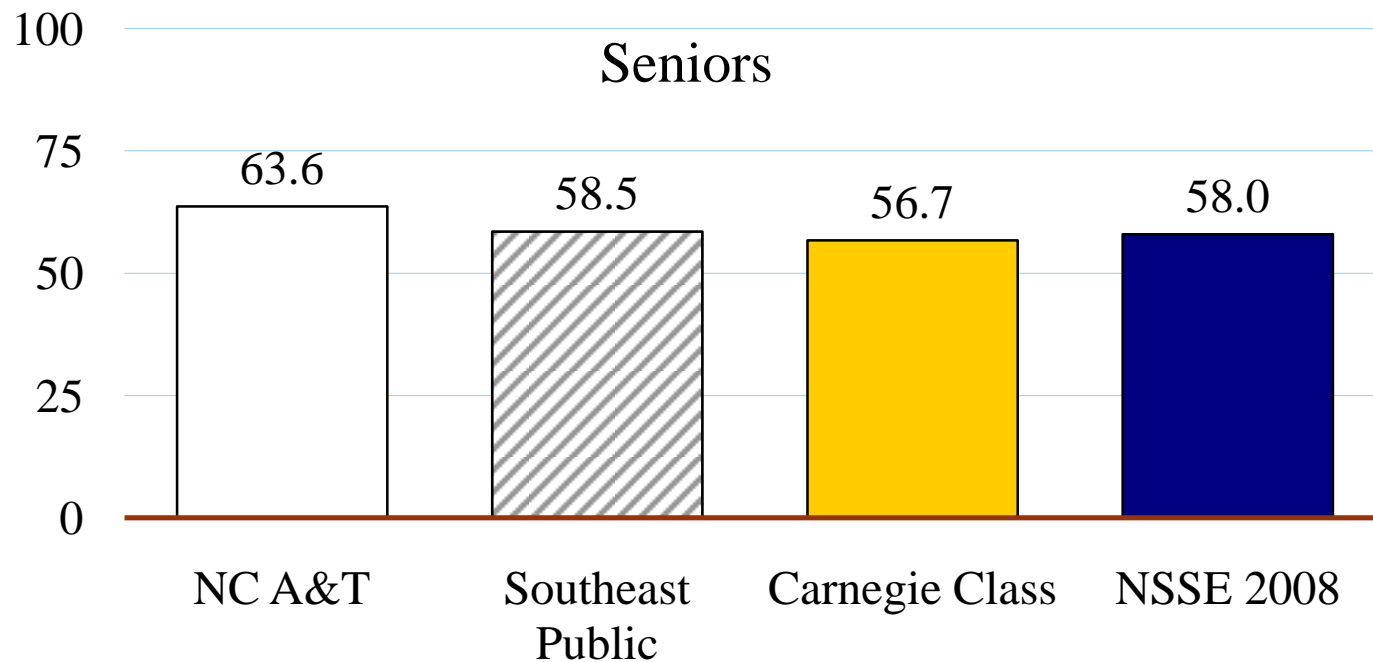
Student-Faculty Interaction - Students learn firsthand how experts think about and solve practical problems by interacting with faculty members inside and outside the classroom. As a result, their teachers become role models, mentors, and guides for continuous, life-long learning.





National Survey of Student Engagement (NSSE) Multi-year Look at Seniors

Supportive Campus Environment - Students perform better and are more satisfied at colleges that are committed to their success and cultivate positive working and social relations among different groups on campus.





Comparison with Peers





Budget Comparisons

University	2009-2010 State Appropriations
East Carolina University *	\$220,856,118
North Carolina A & T State University	\$97,129,748
UNC Charlotte	\$181,023,059
UNC Greensboro	\$162,144,531
UNC Wilmington	\$95,071,428

* Excludes Health Affairs





Fall 2009 Full-time Equivalent (FTE) Enrollment

University	Fall 2009 FTE Enrollment
East Carolina University	24,544
North Carolina A & T State University	9,792
UNC Charlotte	21,910
UNC Greensboro	17,674
UNC Wilmington	12,060





State Appropriations/Actual Student FTE

University	2009-10 State Appropriations*/Fall 2009 FTE
East Carolina University	\$8,998
North Carolina A & T State University	\$9,919
UNC Charlotte	\$8,262
UNC Greensboro	\$9,174
UNC Wilmington	\$7,883

* Excludes ECU Health Affairs Appropriations





BOG Peers-Enrollment and Degrees Awarded

Institution	Enrollment Fall 2008	% Full-time	Degrees Awarded AY 2008-09		
			Bachelor's	Master's	Doctoral*
Cleveland State U	15,139	59%	1,732	1,340	50
Florida A&M U	11,857	89%	1,435	271	28
Jackson State U	8,377	75%	905	352	67
Montana State U	11,976	79%	1,889	440	45
NJ Inst of Tech	8,398	70%	858	952	59
North Dakota St U	13,230	83%	1,746	355	70
Portland State U	26,382	58%	3,325	1,577	68
NC A & T SU	10,388	83%	1,372	377	33
Peer Group Average	13,104	74%	1,709	617	45

*Doctoral includes those reporting doctoral degrees under old reporting structure to the US Dept of Ed and those reporting doctoral research under the new guidelines. Does not include first professional or professional doctoral degrees.





BOG Peers-Enrollment and Degrees Awarded

Institution	Enrollment Fall 2008	% Full-time	Degrees Awarded AY 2008-09		
			Bachelor's	Master's	Doctoral*
South Dakota SU	11,995	73%	1,778	272	24
Tennessee Tech	10,793	75%	1,532	544	17
UTenn- Chattanooga	9,807	81%	1,256	377	5
UTx at El Paso	20,458	60%	2,969	759	45
University of Maine	11,818	78%	1,598	398	58
UMass-Dartmouth	9,155	81%	1,245	235	5
U of South Alabama	14,064	74%	1,654	761	95
NC A & T SU	10,388	83%	1,372	377	33
Peer Group Average	13,104	74%	1,709	617	45

*Doctoral includes those reporting doctoral degrees under old reporting structure to the US Dept of Ed and those reporting doctoral research under the new guidelines. Does not include first professional or professional doctoral degrees.





UNC Peers-Enrollment and Degrees Awarded

Institution	Enrollment Fall 2008	% Full-time	Degrees Awarded AY 2008-09		
			Bachelor's	Master's	Doctoral*
East Carolina University	27,677	75%	3,606	1,521	70
University of North Carolina at Charlotte	23,300	74%	3,455	1,036	68
University of North Carolina at Greensboro	19,976	67%	2,441	985	107
NC A & T SU	10,388	83%	1,372	377	33
UNC Peer Group Average	23,651	72%	3,167	1,181	82

*Doctoral includes those reporting doctoral degrees under old reporting structure to the US Dept of Ed and those reporting doctoral research under the new guidelines. Does not include first professional or professional doctoral degrees.





BOG Peers – Student Diversity

Institution	% White	% Black	% Hispanic	% Asian	% American Indian
Cleveland State U	61%	19%	3%	3%	0%
Florida A&M U	5%	90%	2%	1%	0%
Jackson State U	6%	93%	0%	0%	0%
Montana State U	85%	0%	1%	1%	3%
NJ Inst of Tech	29%	9%	15%	18%	1%
North Dakota St U	86%	2%	1%	1%	1%
Portland State U	65%	3%	5%	9%	1%
NC A & T SU	8%	86%	1%	1%	0%
Peer Group Average	58%	19%	8%	3%	1%





BOG Peers- Student Diversity

Institution	% White	% Black	% Hispanic	% Asian	% American Indian
South Dakota SU	87%	1%	1%	1%	2%
Tennessee Tech	83%	3%	1%	1%	0%
UTenn- Chattanooga	78%	16%	2%	2%	0%
UTx at El Paso	10%	3%	75%	1%	0%
University of Maine	75%	1%	1%	1%	2%
UMass-Dartmouth	79%	6%	3%	2%	1%
U of South Alabama	67%	17%	2%	3%	1%
NC A & T SU	8%	86%	1%	1%	0%
Peer Group Average	58%	19%	8%	3%	1%





UNC Peers- Student Diversity

Institution	% White	% Black	% Hispanic	% Asian	% American Indian
East Carolina University	75%	14%	2%	2%	1%
University of North Carolina at Charlotte	72%	15%	4%	5%	0%
University of North Carolina at Greensboro	65%	20%	3%	3%	1%
NC A & T SU	8%	86%	1%	1%	0%
UNC Peer Group Average	71%	16%	3%	3%	1%





UNC Peers- Degree Programs

Institution	# Bachelor's Degree Programs	# Master's Degree Programs	# Doctoral* Degree Programs	# Enrolled Bachelor's Level F'09	# Enrolled Master's Level F'09	# Enrolled Doctoral* Level F'09
East Carolina University	103	73	18	21,458	5,439	363
University of North Carolina at Charlotte	93	59	18	19,419	4,510	772
University of North Carolina at Greensboro	87	63	28	17,455	3,109	742
NC A & T SU	66	31	6	8,955	1,486	173
UNC Peer Group Average	94	65	21	19,444	4,353	626

*Doctoral does not include both first professional degrees.





Number of Academic Majors Within Degree Programs

Undergraduate majors = 117

Master's majors = 58

Doctoral majors = 9

University Total = 184

Example of Degree to Major Breakdown

CIP Degree Program:

40.0801 Physics, General B.S.

NC A&T Major (Major Code):

Space Science (346)

Interdisciplinary Physics (345)

Environmental Geophysics (344)

Engineering Physics (343)

General Physics (088)





BOG Peers – Freshman Admission Data for Fall 2009

Institution	Average HS GPA	SAT Critical Reading		SAT Math		ACT Composite	
		25th percentile	75th percentile	25th percentile	75th percentile	25th percentile	75th percentile
Cleveland State U	3.05	*DNR	*DNR	*DNR	*DNR	20	26
Florida A&M U	2.94	470	610	490	640	20	26
Jackson State U	2.88	*DNR	*DNR	*DNR	*DNR	20	25
Montana State U	3.26	390	500	400	520	15	20
NJ Inst of Tech	2.80	480	590	480	600	21	26
North Dakota St U	3.37	470	560	490	590		
Portland State U	3.25	*DNR	*DNR	*DNR	*DNR	18	24
NC A & T SU	3.05	400	500	410	510	17	22
Peer Group Average	3.18	453	571	470	592	19	24





BOG Peers – Freshman Admission Data for Fall 2009

Institution	Average HS GPA	SAT Critical Reading		SAT Math		ACT Composite	
		25th percentile	75th percentile	25th percentile	75th percentile	25th percentile	75th percentile
South Dakota SU	3.34	410	550	430	570	18	23
Tennessee Tech	3.40	410	500	410	500	17	21
UTenn- Chattanooga	3.26	*DNR	*DNR	*DNR	*DNR	16	20
UTx at El Paso	3.13	490	620	510	630	21	27
University of Maine	3.18	480	580	540	650	*DNR	*DNR
UMass-Dartmouth	3.37	470	610	490	650	20	26
U of South Alabama	3.30	460	590	460	570	*DNR	*DNR
NC A & T SU	3.05	400	500	410	510	17	22
Peer Group Average	3.18	453	571	470	592	19	24





UNC Peers – Freshman Admission Data for Fall 2009

Institution	Average HS GPA	SAT Critical Reading		SAT Math		ACT Composite	
		25th percentile	75th percentile	25th percentile	75th percentile	25th percentile	75th percentile
East Carolina University	3.44	450	540	470	570	19	23
University of North Carolina at Charlotte	3.54	470	560	490	590	20	24
University of North Carolina at Greensboro	3.58	460	560	470	570	19	24
NC A & T SU	3.05	400	500	410	510	17	22
UNC Peer Group Average	3.52	460	553	477	577	19	24





BOG Peers – Student Retention and Graduation Rates

Institution	First Year Retention (Fall 2007 Cohort)	4-Year Graduation rate (Fall 2004 Cohort)	5-Year Graduation rate (Fall 2003 Cohort)	6-Year Graduation rate (Fall 2002 Cohort)
Cleveland State U	57	8	20	26
Florida A&M U	83	13	30	41
Jackson State U	74	20	36	43
Montana State U	72	16	40	48
NJ Inst of Tech	82	16	45	55
North Dakota St U	81	19	40	47
Portland State U	69	13	27	34
NC A & T SU	74	15	33	38
Peer Group Average	72	18	36	43





BOG Peers- Student Retention and Graduation Rates

Institution	First Year Retention (Fall 2007 Cohort)	4-Year Graduation rate (Fall 2004 Cohort)	5-Year Graduation rate (Fall 2003 Cohort)	6-Year Graduation rate (Fall 2002 Cohort)
South Dakota SU	77	21	46	53
Tennessee Tech	71	18	38	47
UTenn-Chattanooga	61	26	38	40
UTx at El Paso	70	4	18	31
University of Maine	76	34	54	59
UMass-Dartmouth	74	27	42	46
U of South Alabama	67	14	25	33
NC A & T SU	74	15	33	38
Peer Group Average	72	18	36	43





UNC Peers- Student Retention and Graduation Rates

Institution	First Year Retention (Fall 2008 Cohort)	4-Year Graduation rate (Fall 2005 Cohort)	5-Year Graduation rate (Fall 2004 Cohort)	6-Year Graduation rate (Fall 2003 Cohort)
East Carolina University	78.8	32.5	50.8	56.8
University of North Carolina at Charlotte	77.9	25.9	48.3	53.9
University of North Carolina at Greensboro	76.6	27.9	48.1	51.6
NC A & T SU	77.1	16.5	32.7	37.2
UNC Peer Group Average	77.8	28.8	49.1	54.1



BOG Peers – Faculty Salaries

2009-10

Institution	Avg. Salary 9mo. FT Prof AY 09-10	Avg. Salary 9mo. FT Assoc AY 09-10	Avg. Salary 9mo. FT Asst AY 09-10	Avg. Salary 9mo. FT All Ranks AY 09-10
Cleveland State U	\$99,650	\$70,916	\$60,722	\$73,311
Florida A&M U	\$85,847	\$71,197	\$60,400	\$66,875
Jackson State U	\$68,720	\$59,685	\$53,731	\$53,960
Montana State U	\$83,828	\$63,855	\$59,702	\$64,823
NJ Inst of Tech	\$151,412	\$112,280	\$84,507	\$108,359
North Dakota St U	\$90,614	\$71,579	\$63,993	\$66,346
Portland State U	\$93,436	\$73,517	\$59,314	\$69,915
NC A & T SU	\$93,322	\$74,805	\$64,496	\$71,673
Peer Group Average	\$93,073	\$72,206	\$61,537	\$70,207



BOG Peers- Faculty Salaries

2009-10

Institution	Avg. Salary 9mo. FT Prof AY 09-10	Avg. Salary 9mo. FT Assoc AY 09-10	Avg. Salary 9mo. FT Asst AY 09-10	Avg. Salary 9mo. FT All Ranks AY 09-10
South Dakota SU	\$78,176	\$64,810	\$56,297	\$59,555
Tennessee Tech	\$78,005	\$61,989	\$52,919	\$63,346
UTenn-Chattanooga	\$82,735	\$62,916	\$55,489	\$61,389
UTx at El Paso	\$96,936	\$73,352	\$66,166	\$68,506
University of Maine	\$96,837	\$75,963	\$62,353	\$79,449
UMass-Dartmouth	\$107,803	\$83,056	\$70,491	\$84,004
U of South Alabama	\$89,026	\$65,767	\$55,435	\$63,056
NC A & T SU	\$93,322	\$74,805	\$64,496	\$71,673
Peer Group Average	\$93,073	\$72,206	\$61,537	\$70,207





UNC Peers - Faculty Salaries

2009-10

Institution	Avg. Salary 9mo. FT Prof AY 09-10	Avg. Salary 9mo. FT Assoc AY 09-10	Avg. Salary 9mo. FT Asst AY 09-10	Avg. Salary 9mo. FT All Ranks AY 09-10
East Carolina University	\$94,128	\$74,933	\$66,436	\$69,355
University of North Carolina at Charlotte	\$110,806	\$81,926	\$69,265	\$77,073
University of North Carolina at Greensboro	\$108,417	\$77,626	\$64,340	\$75,314
NC A & T SU	\$93,322	\$74,805	\$64,496	\$71,673
UNC Peer Group Average	\$104,450	\$78,162	\$66,680	\$73,914





BOG Peers – Research Expenditures

Institution	% Research of Total Operation Expenditures FY'08	Research \$\$ per Student FTE FY'08
Cleveland State U	6%	1,433
Florida A&M U	9%	2,160
Jackson State U	17%	4,000
Montana State U	31%	9,716
NJ Inst of Tech	32%	10,566
North Dakota St U	27%	7,013
Portland State U	10%	1,716
NC A & T SU	10%	2,316
Peer Group Average	15%	3,8912





BOG Peers - Research Expenditures

Institution	% Research of Total Operation Expenditures FY'08	Research \$\$ per Student FTE FY'08
South Dakota SU	18%	3,838
Tennessee Tech	7%	1,044
UTenn-Chattanooga	6%	947
UTx at El Paso	13%	2,478
University of Maine	18%	5,496
UMass-Dartmouth	10%	2,284
U of South Alabama	5%	2,084
NC A & T SU	10%	2,316
Peer Group Average	15%	3,912





UNC Peers - Research Expenditures

Institution	% Research of Total Operation Expenditures FY'08	Research \$\$ per Student FTE FY'08
East Carolina University	3%	918
University of North Carolina at Charlotte	6%	1,109
University of North Carolina at Greensboro	4%	859
NC A & T SU	10%	2,316
UNC Peer Group Average	4%	962





Questions

