

# **BOARD OF TRUSTEE**

Department of Athletics

## **Annual Report Summary**

*September 20, 2013*



**North Carolina Agricultural and Technical State University**

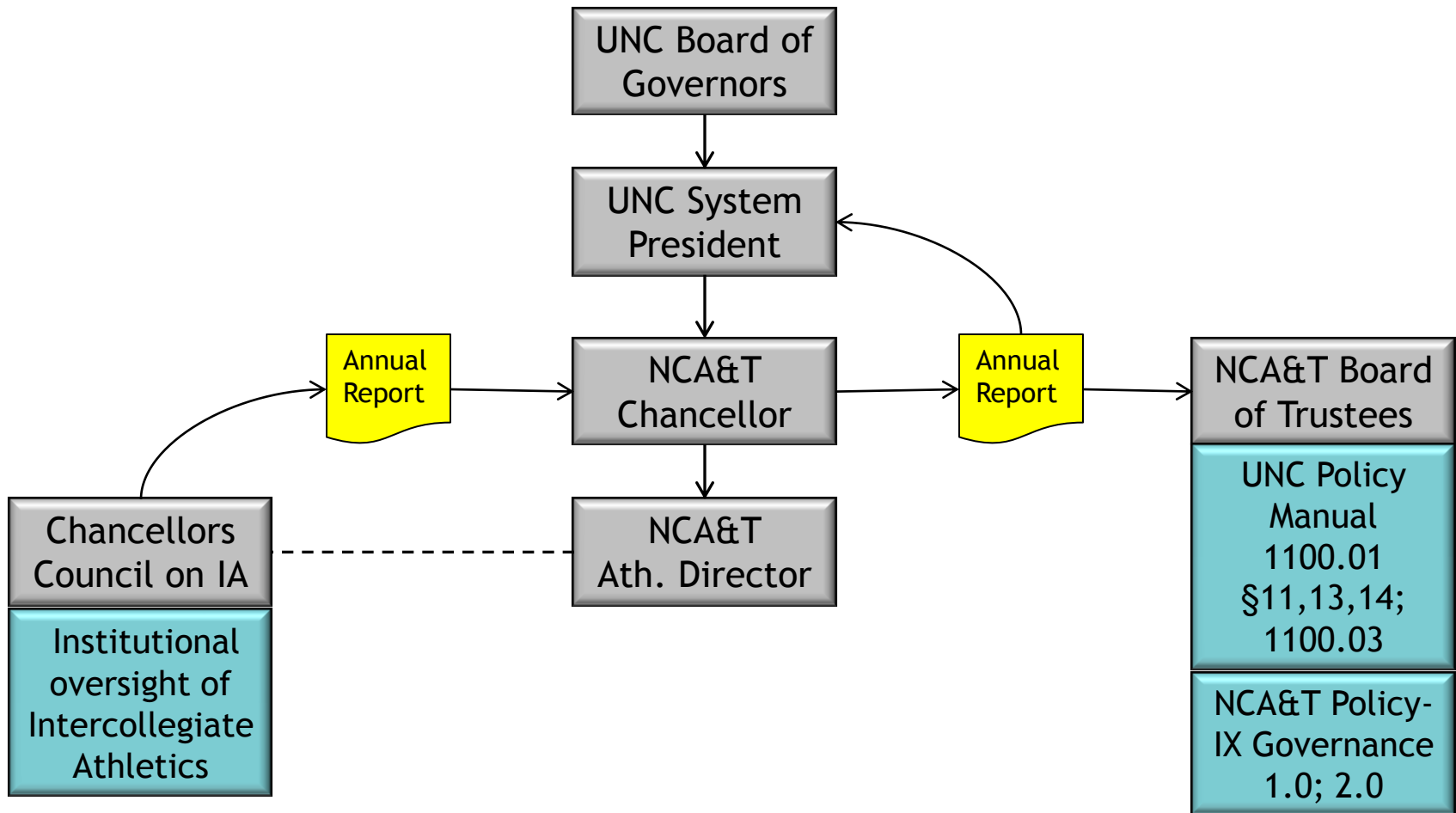


# Annual Report to BOT

- A statement regarding the mission and vision of the Intercollegiate Athletics department;
- A description or representation of Departmental organization;
- A copy of the admission policy for student-athletes, including the definitions utilized for exceptions to the established admission criteria articulated for students generally;
- A report on the academic performance of any student-athletes admitted as an exception to the established admission criteria articulated for students generally;
- Student-athlete academic profiles, including SAT/ACT score, high school grade point average, classification, and major;
- A summary of all NCAA infractions reported during the year and the status of their resolution;
- A review of the Department of Intercollegiate Athletics' compliance with all Departmental policies;
- A review and analysis of the Department's fiscal position and stability;
- A review of Departmental compliance with all existing Plans for Improvement developed subsequent to an NCAA Certification Self-Study review or as part of an Academic Progress Rate waiver process;
- A review of the current year NCAA Financial Dashboard and Comparative Data;
- A summary of the comparison between the current year Equity in Athletics Disclosure Act report, the NCAA Financial Report, and the institutional Gender Equity, Diversity, and Student-Athlete Well-Being Plan;
- Team Academic Progress Rate information, including six-year graduation rates; and
- Information regarding booster club organization and activity.



# Governance Structure - Athletics





## 2012-13 Special Admits

Total 2012-13	SAP	DNE	Probation	Suspension	Withdrew
13	7	2	1	1	2

## 2012-13 Exception Academic Profile

Freshman	Transfers	GPA	Math	Test Score	Other
11	2	5	3	2	4



## Academic Profile

### Test Scores

Group	2008	2009	2010	2011	2012	2013
Athletes	926	913	894	909	881	926
Student Body	920	903	895	903	907	906

### High School GPA

Group	2008	2009	2010	2011	2012	2013
Athletes (core)	3.02	3.15	3.02	3.05	3.06	3.04
Student Body	3.11	3.05	3.04	3.13	3.24	3.25



## Compliance Review

Infractions	Amateurism	PTD	Recruiting	Practice
7	4	1	1	1

## Waivers

Submitted	PTD	Initial E.	Transfer	Granted
10	5 (4)	4 (3)	1 (1)	8

## Drug Testing

Tests	10/24/12	11/11/12	4/11/13	2x Fail
75-90	4	5	2	0



## APR / Graduation Rates

### Departmental Mean APR

<b>SY 2008</b>	<b>SY 2009</b>	<b>SY 2010</b>	<b>SY 2011</b>	<b>MY 2011</b>
904	925	929	943	925

### 6 Year Graduation Rate %

<b>2008</b>	<b>2009</b>	<b>2010</b>	<b>2011</b>	<b>2012</b>
49	51	53	54	56



# African – American Male Graduation Rates

2011-2012 Single Year  
Rate for AA Male Football  
and Basketball Students

**2011-2012  
NCA&T Rate =  
73%**

           = where NCA&T rate  
would fit in each  
conference

ACC	B10	PAC 12	SEC	B12
81	<u>75</u>	100	<u>79</u>	<u>68</u>
77	69	82	72	65
<u>77</u>	67	<u>75</u>	67	50
71	47	70	58	25
59	45	63	53	25
58	44	59	53	23
55	43	50	41	22
50	39	47	38	22
50	36	45	32	16
48	27	40	25	10
39	15	25	21	
25			16	