

ACADEMIC RESTRUCTURING BRIEFING

Board of Trustees Retreat
August 1, 2014



North Carolina Agricultural and Technical State University



Rational for Restructuring and Realignment of Academic Affairs

- To examine configurations that enhance visibility and strengthens academic programs
- To examine configurations to enhance synergy and collaboration both in curriculum and in research
- To examine configurations that provide faculty more opportunity for innovative teaching, research, and engagement
- To examine configurations that provide effective and efficient use of academic resources



Restructuring, why now?

- A new Provost with fresh ideas
- In preparation for enhancing the quality of faculty through strategic hiring
- In preparation for succession planning due to the volume of faculty and staff eligible to retire
- Assess the financial efficiency of multiple structures as a result of current and projected economic indicators



Restructuring, why now?

Overall, to establish the best structure to reach the goals of a preeminent land-grant university, *A&T Preeminence 2020*.



Past A&T Restructuring Activities

- Academic Review Committee in Spring 2011
- A report was developed but no movement, issues of transparency and inclusiveness



Example Timeline

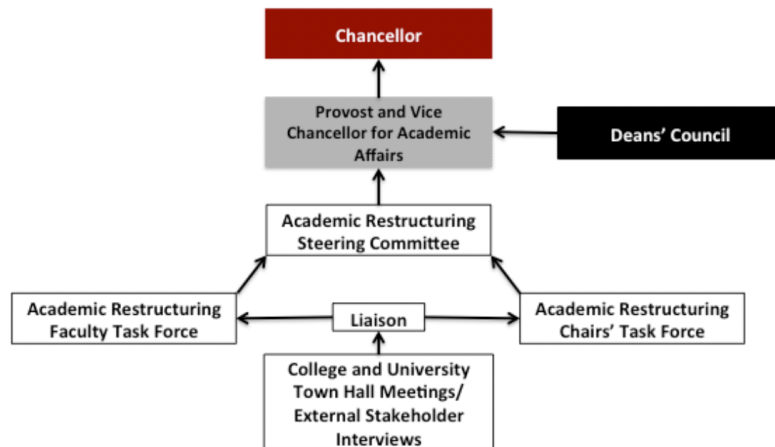
Sept 2014	Provost Develops Process/Structure
Oct 2014	Provost Charges Committee(s)
Oct/Nov/Dec 2014	Committee(s) meet with colleges/schools, Graduate Council, Deans Council, internal and external stakeholders, and BOT and work on initial proposals
Late Jan 2015	Initial proposals from committee(s) are due to Provost
Feb 2015	Communications with campus community and input on preliminary report(s)
Early Mar 2015	Final recommendations delivered to Provost for final decision
Late Mar 2015	Provost submits final academic restructuring to Chancellor
Apr 2015	Final Proposal to BOT
May 2015	Request submitted to UNCGA/BOG for approval
June 2015	Provost works with Dean's Council to design plan to implement recommendations



Example Committee(s) Structures and Restructuring Processes

Structure #1

Figure 1. Academic Restructuring Process*

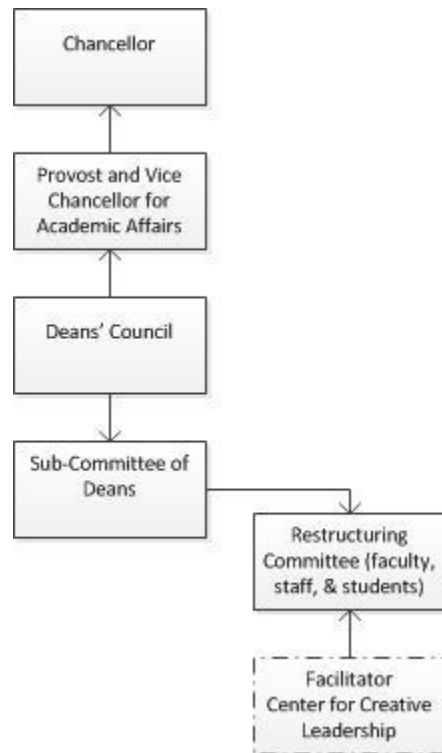


- Adapted from University of Arkansas at Little Rock Restructuring Process. Doctoral/Research University with 13,132 students.
- Process selected by Provost and President of Faculty Senate. Two committees worked on proposals that went to a steering committee with a liaison working between the groups.
- Input was constant from public throughout process.



Example Committee(s) Structures and Restructuring Processes

Structure #2

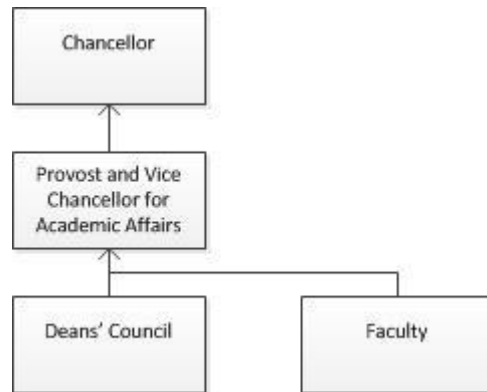


- Adapted from University of North Carolina Restructuring Process. Research University (high research activity) with over 18,000 students.
- Process selected by sub-committee of the Deans' Council which formed Restructuring Committee that worked on proposals and submitted to Provost.
- Public comments came at the end of the process.



Example Committee(s) Structures and Restructuring Processes

Structure #3



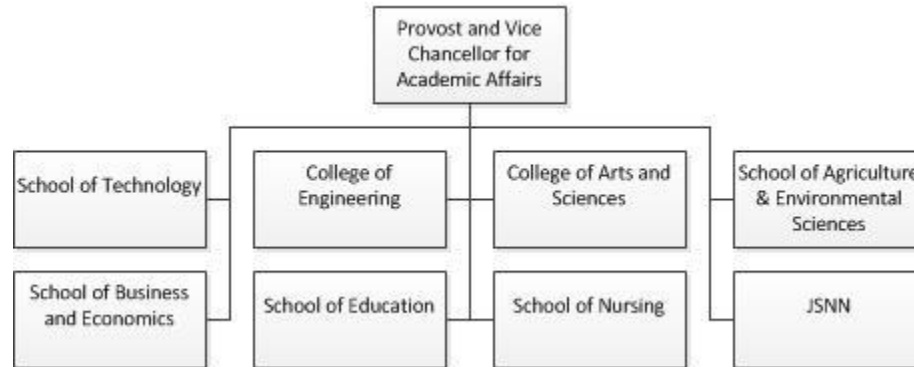
- Adapted from restructuring processes of two institutions:
 - University of Southern Maine (Master's Large Comprehensive) with about 10,000 students
 - Ohio University a Research University (high research activity) with over 20,000 students.
- White paper prepared by Deans' Council or Subset of Deans' Council in which Provost selects the structure and then sends to faculty/faculty senate for the implementation plan with consideration of minor changes.
- Concerns that faculty input was late in the process.



Current College/School Structure for Peer Institutions



Current College/School Structure for North Carolina A&T State University

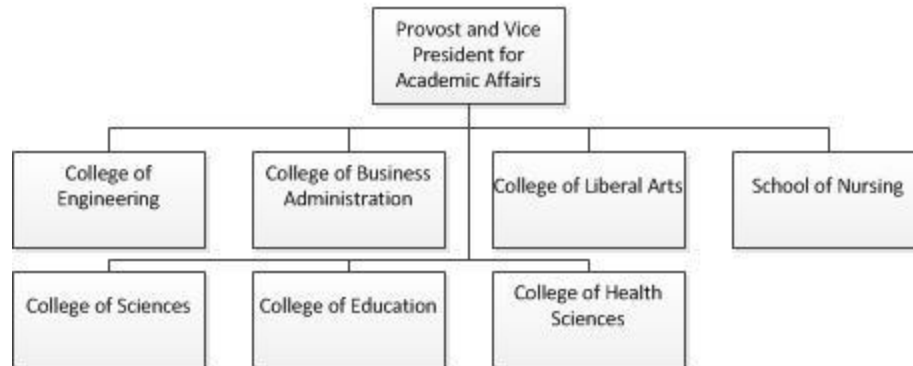


Doctoral/Research University
Enrollment: Over 10,000

Note: Graduate, Honors, University, and General Colleges are not shown for simplicity



Current College/School Structure for University of Texas at El Paso

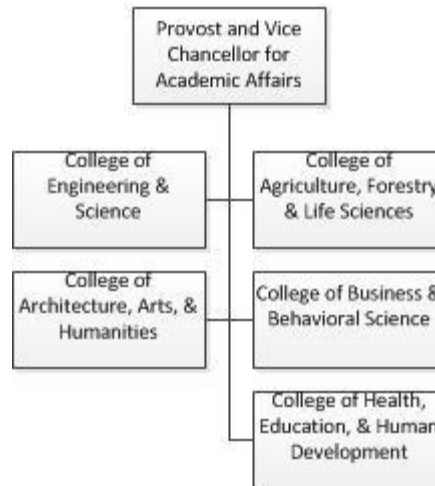


Research University (high research activity)
Enrollment: Over 21,000

Note: Graduate, Honors, University, and General Colleges are not shown for simplicity



Current College/School Structure for Clemson University

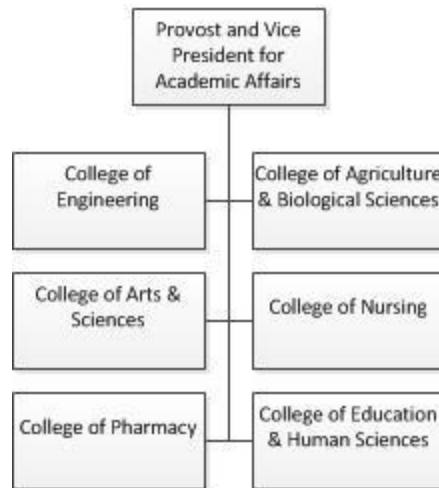


Research University (high research activity)
Enrollment: Over 19,000

Note: Graduate, Honors, University, and General Colleges are not shown for simplicity



Current College/School Structure for South Dakota State University

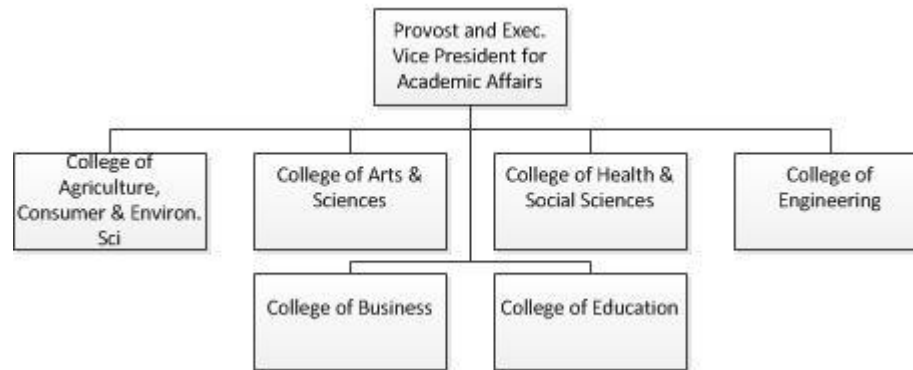


Research University (high research activity)
Enrollment: Over 12,000

Note: Graduate, Honors, University, and General Colleges are not shown for simplicity



Current College/School Structure for New Mexico State University

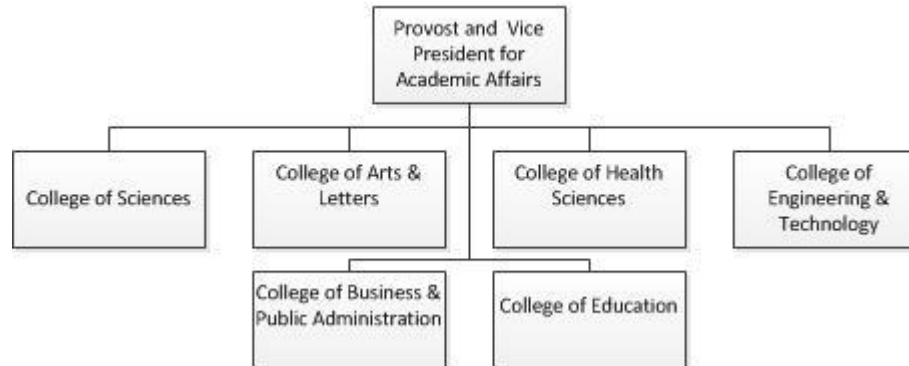


Research University (high research activity)
Enrollment: Over 18,000

Note: Graduate, Honors, University, and General Colleges are not shown for simplicity



College/School Structure for Old Dominion University

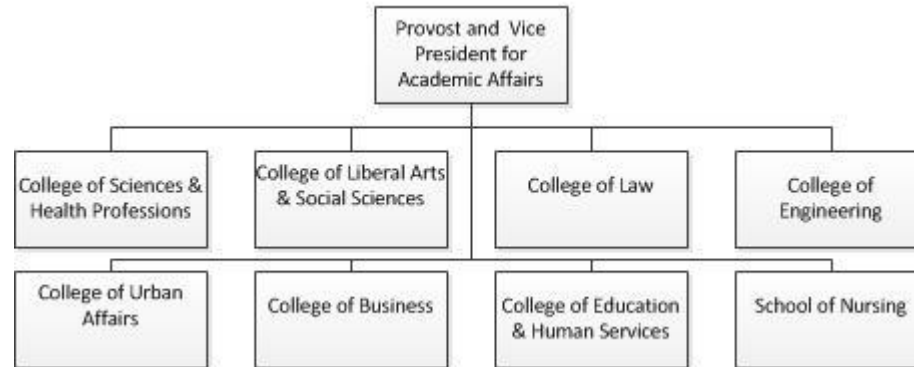


Research University (high research activity)
Enrollment: Over 24,000

Note: Graduate, Honors, University, and General Colleges are not shown for simplicity



College/School Structure for Cleveland State University

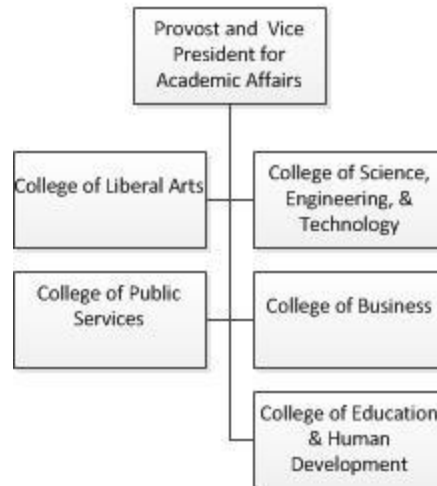


Research University (high research activity)
Enrollment: Over 16,000

Note: Graduate, Honors, University, and General Colleges are not shown for simplicity



College/School Structure for Jackson State University

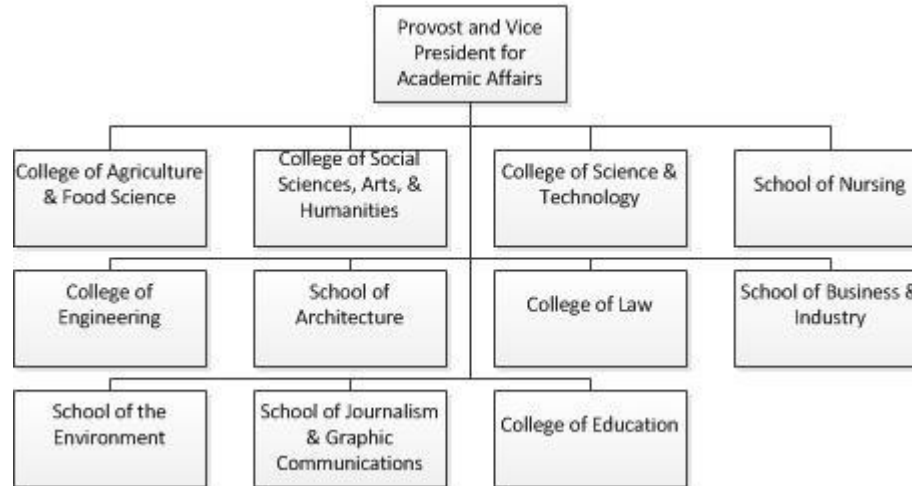


Research University (high research activity)
Enrollment: Over 8,000

Note: Graduate, Honors, University, and General Colleges are not shown for simplicity



College/School Structure for Florida Agricultural and Mechanical University



Doctoral/Research University
Enrollment: Over 12,000

Note: Graduate, Honors, University, and General Colleges are not shown for simplicity



QUESTIONS

