

# **Board of Trustees Academic Affairs Committee**

## **Department of Athletics Annual Report Summary**

Earl Hilton, Director  
September 12, 2014



**North Carolina Agricultural and Technical State University**



# Academic Profile – 2013-14

<b>Student Summary</b>	<b>Campus Total</b>
Total number of enrolled freshmen	1875
Total number of enrolled freshmen receiving MCR exceptions	6
Total number of enrolled recruited freshmen student-athletes	47
Total number of enrolled recruited freshmen student-athletes receiving MCR exceptions	4
Mean Spring 2014 GPA - Student-Athletes/Non-student-athletes	2.77 / 2.77

<b>Teams</b>	<b>Total RFSA</b>	<b>Mean HS Core GPA</b>	<b>Mean SAT/ACT</b>
Football	21	3.02	957/20
Men’s Basketball	8	3.11	924/18
Women’s Basketball	3	3.40	923/NR



## 2012-14 Special Admits

Year	SAP	DNE	Probation	Suspension	Withdrew
(2012-13) 13	7 (54%)	2	1	1	2
(2013 -14) 8	7 (88%)	0	0	1	0

## 2012-14 Exception Academic Profile

Freshman	Transfers	GPA	Test Score	MCR
(2012-13)11	2	5	2	4
(2013-14) 6	2	1	0	4



## Compliance Review

Year	Infractions	Amateurism	PTD	Recruiting	Practice
2012-13	7	4	1	1	1
2013-14	6	0	0	5	1

## Waivers

Year	Submitted	PTD	Initial E.	Transfer
2012-13	10	5 (4)	4 (3)	1 (1)
2013-14	8	1 (1)	1 (1)	1 (1)



## Departmental Mean APR

<b>SY 2010</b>	<b>SY 2011</b>	<b>SY 2012</b>	<b>SY 2013</b>
925	932	945	946

## 6 Year Graduation Success Rate

<b>2008</b>	<b>2009</b>	<b>2010</b>	<b>2011</b>	<b>2012</b>	<b>2013</b>
49	51	53	54	56	59



# Audit – Athletics Rules Compliance

Audit period July 1, 2010 – December 31, 2011

- Six issues identified
  - Three issues with record maintenance and retrieval systems
  - Two issues with sports camps – lack of record documentation and failure to follow cash accounting procedure
  - One issue with lack of a rules education policy
  
- Department of Athletics has developed a plan and a schedule to remediate these audit findings.

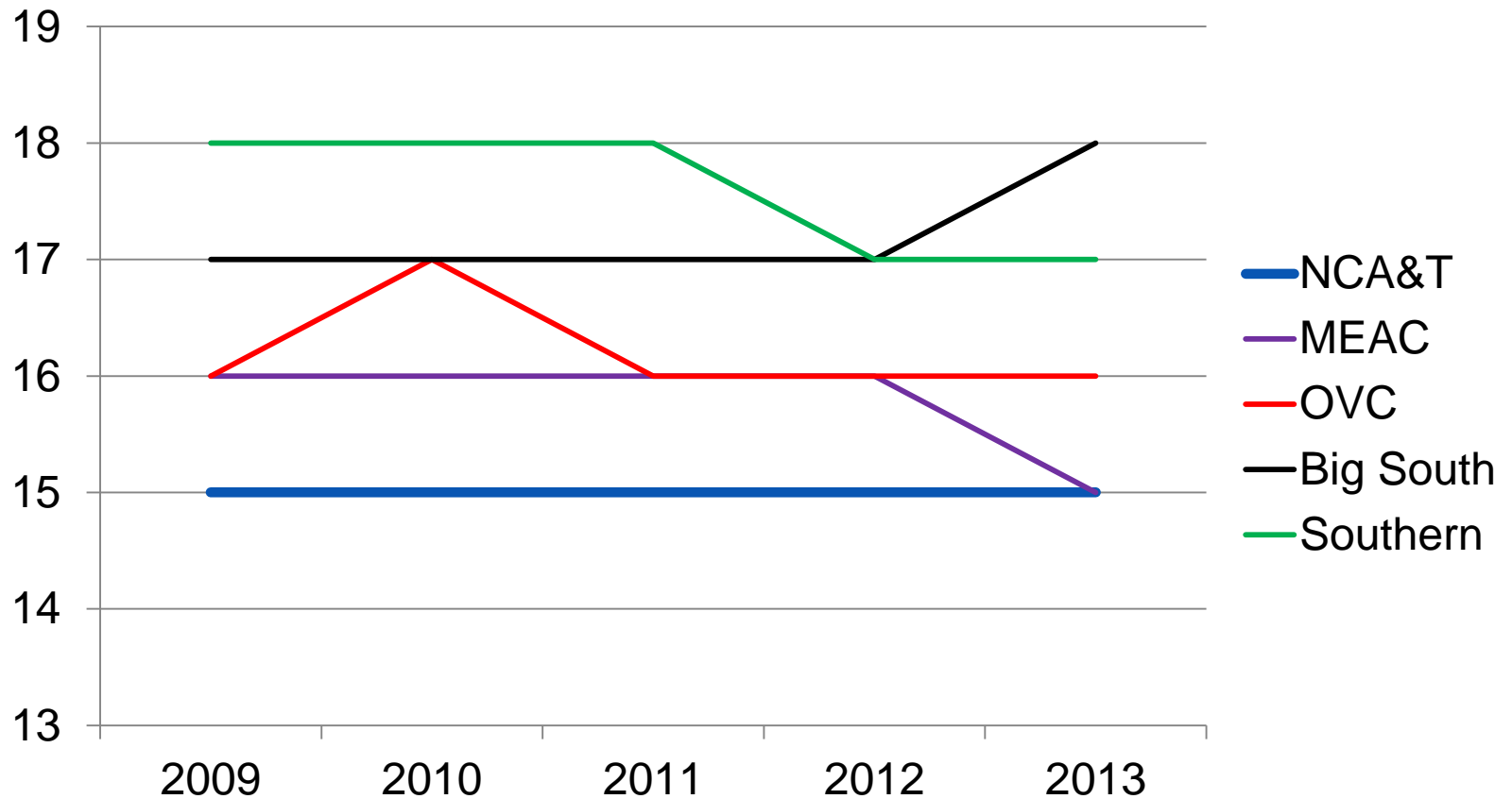


# CCIA Annual Report on Intercollegiate Athletics

- 11 Recommendations for Improvement (RFI)  
Period covered July 1, 2013 – June 30, 2014
  - 1 RFI regarding Men's Basketball APR
  - 3 RFI regarding improving communication
  - 2 RFI regarding policy and procedure nomenclature
  - 2 RFI regarding document and data integrity
  - 2 RFI regarding academic integrity and monitoring
  - 1 RFI regarding Diversity and Gender Equity Plan review
  
- The Department of Intercollegiate Athletics has reviewed and adopted these Recommendations for Improvement.



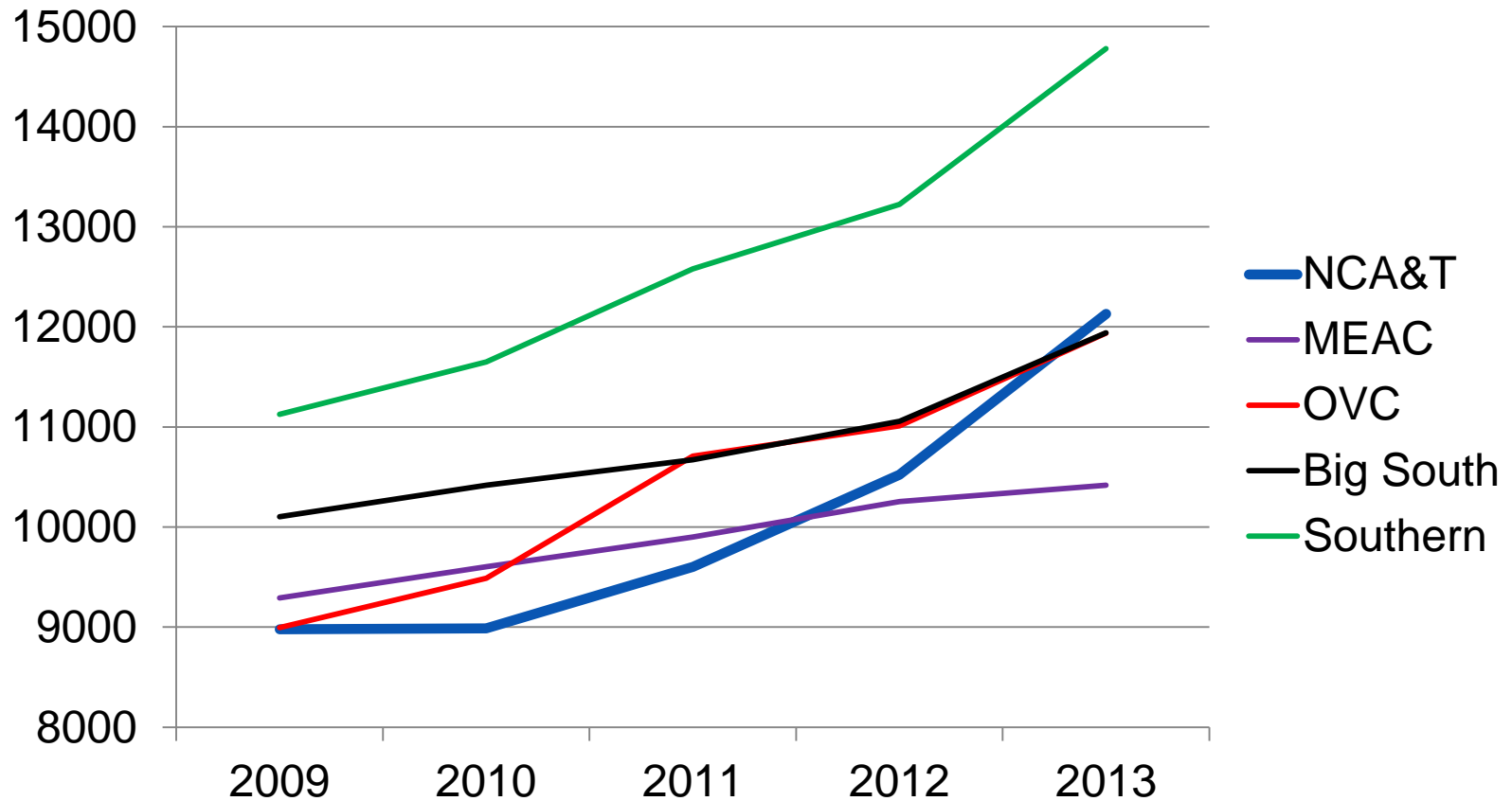
## NCAA Sponsored Sports





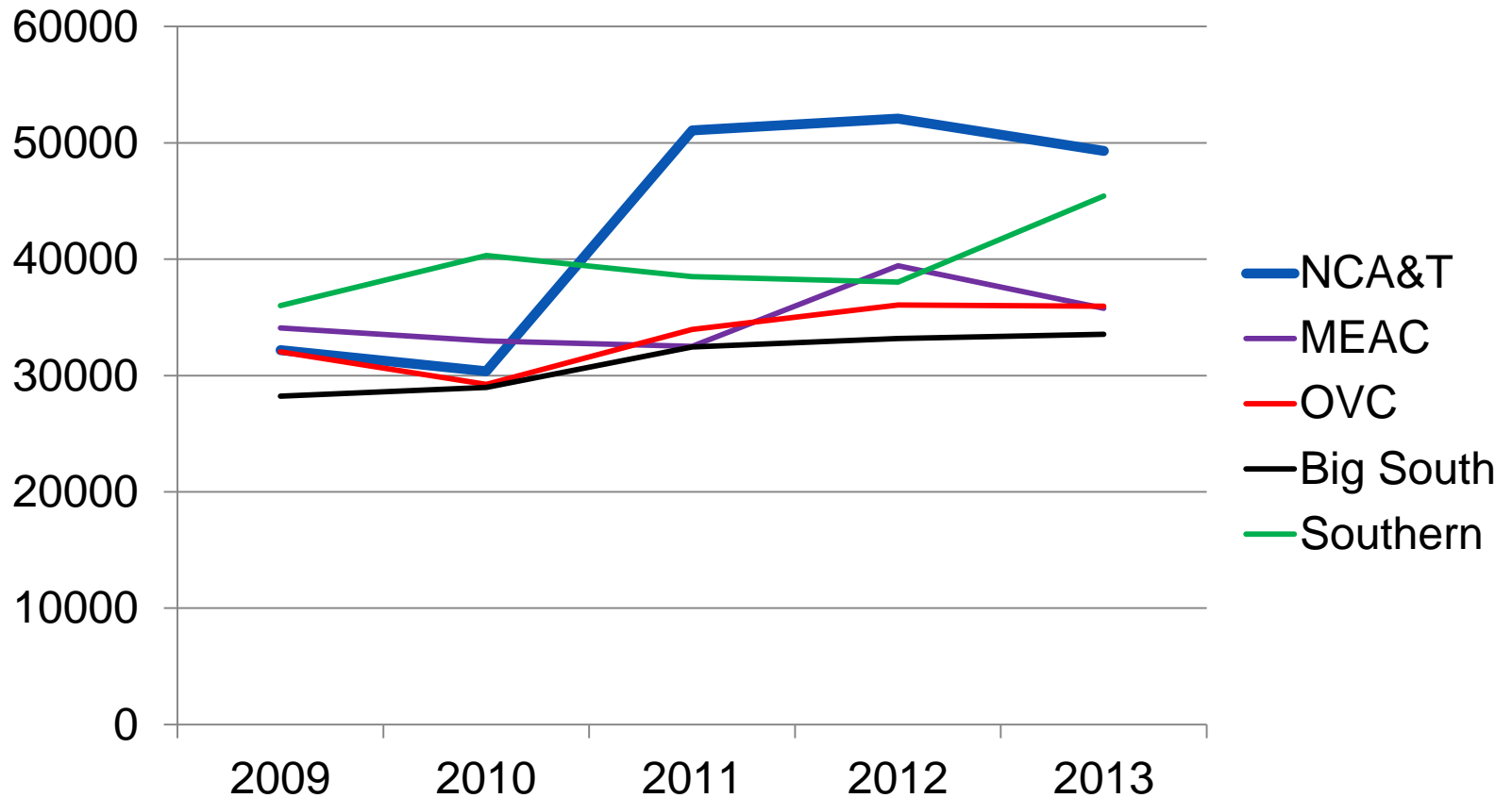


## Total Expenditures (Thousands)



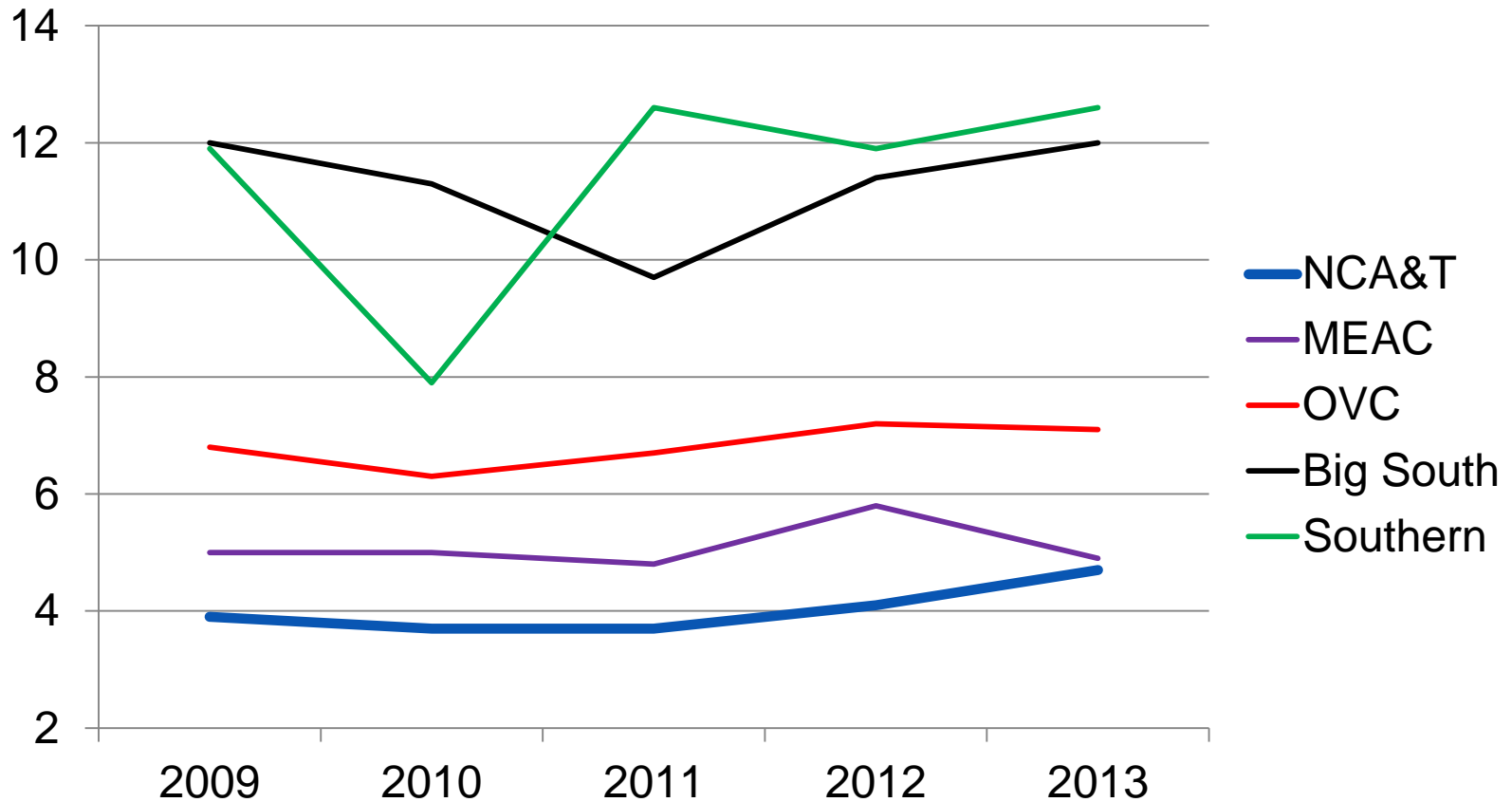


## Expenditure per Student Athlete



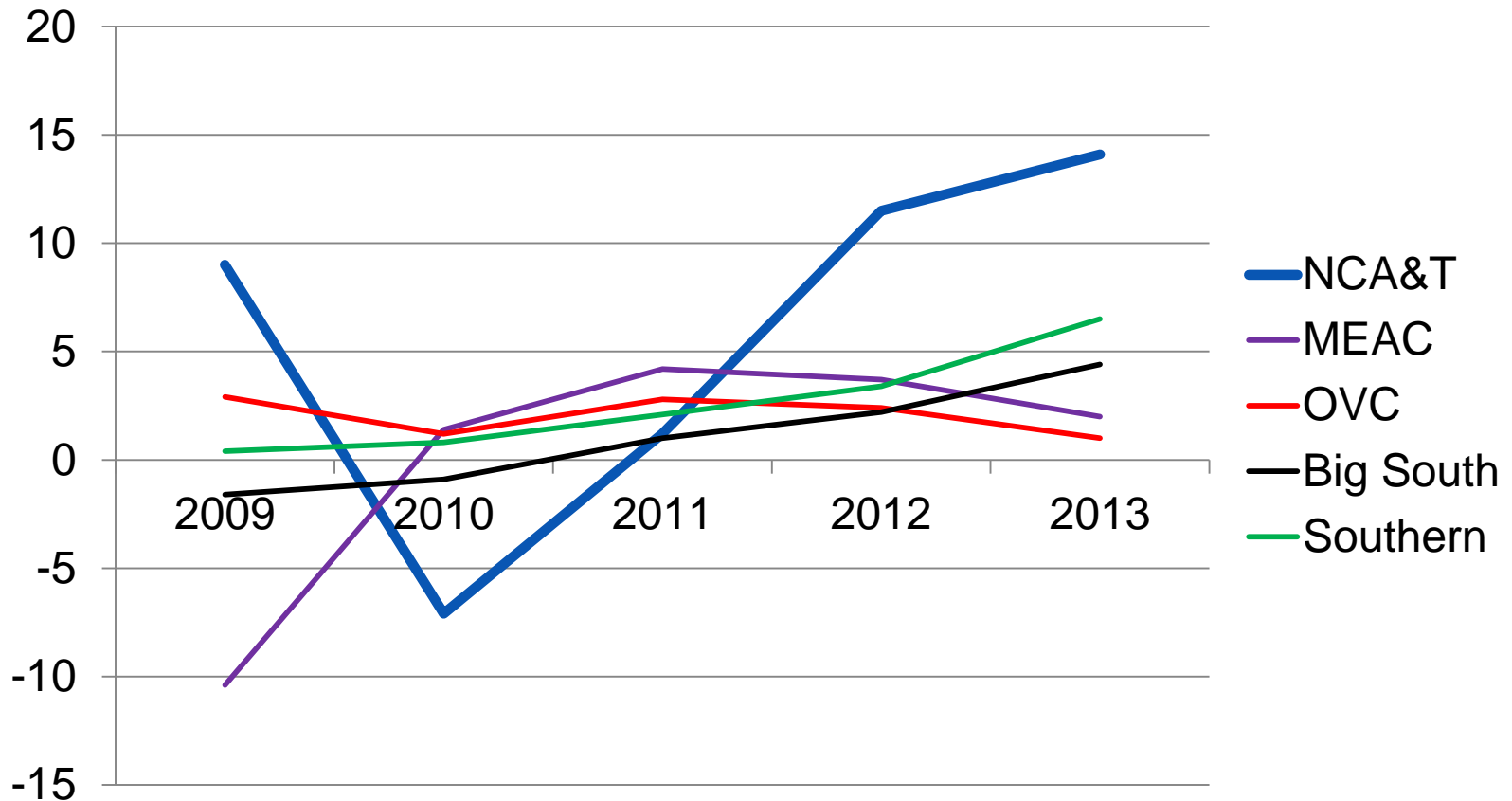


## Athletics Expenditures as % of Institutional Expenditures



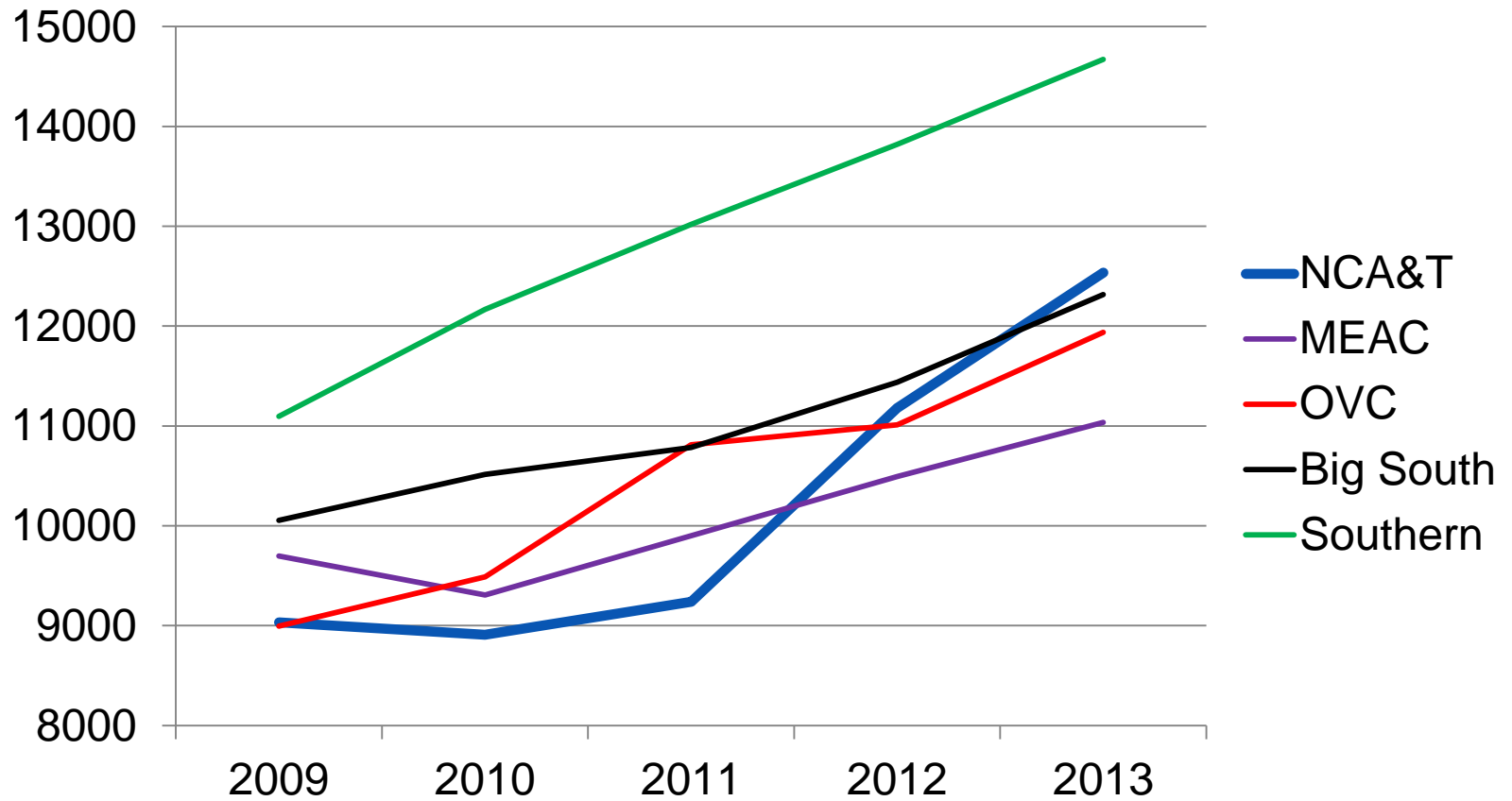


## Rate of Change – Athletics v. Institution



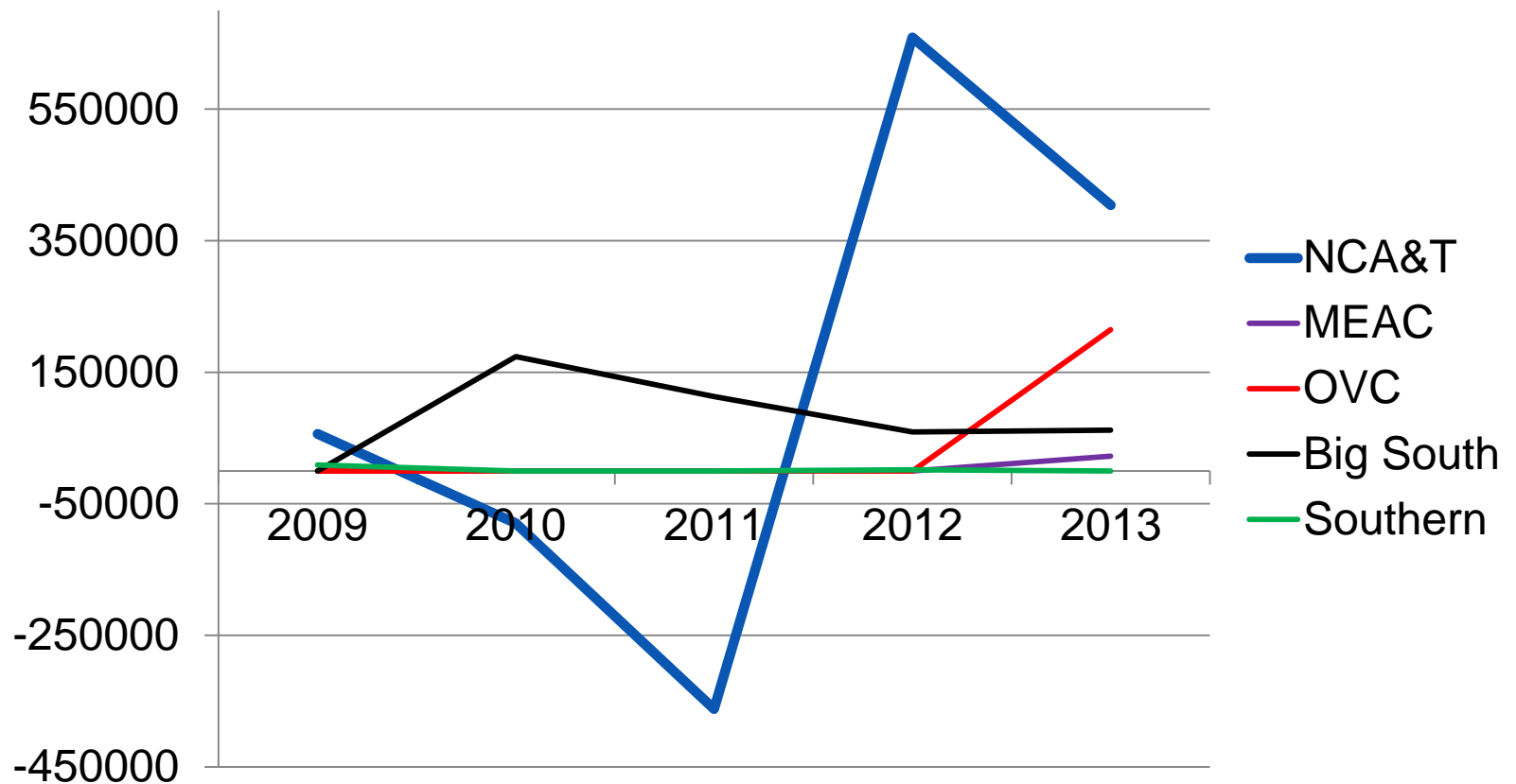


## Athletics Revenue (Thousands)



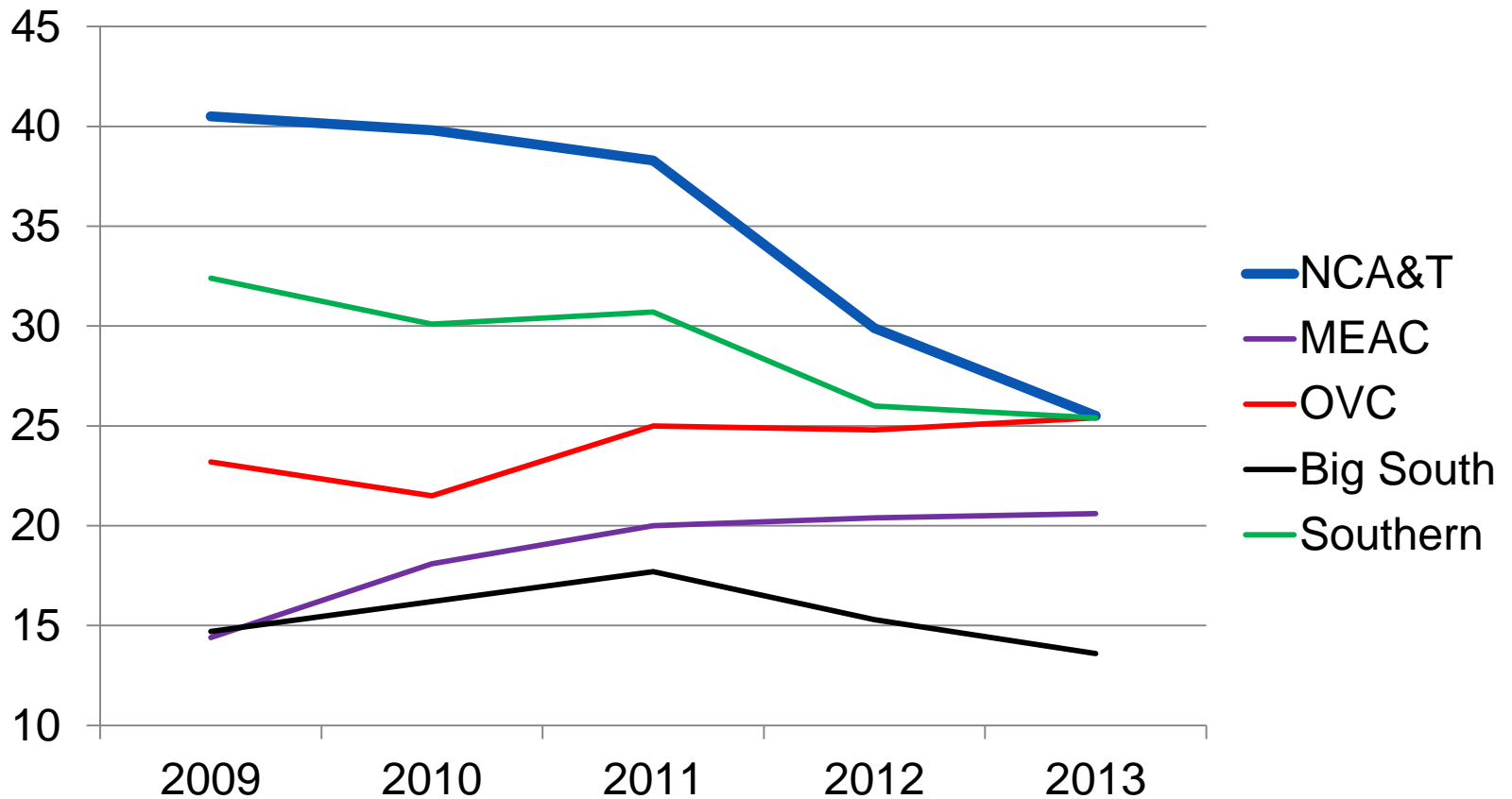


# Net Revenue



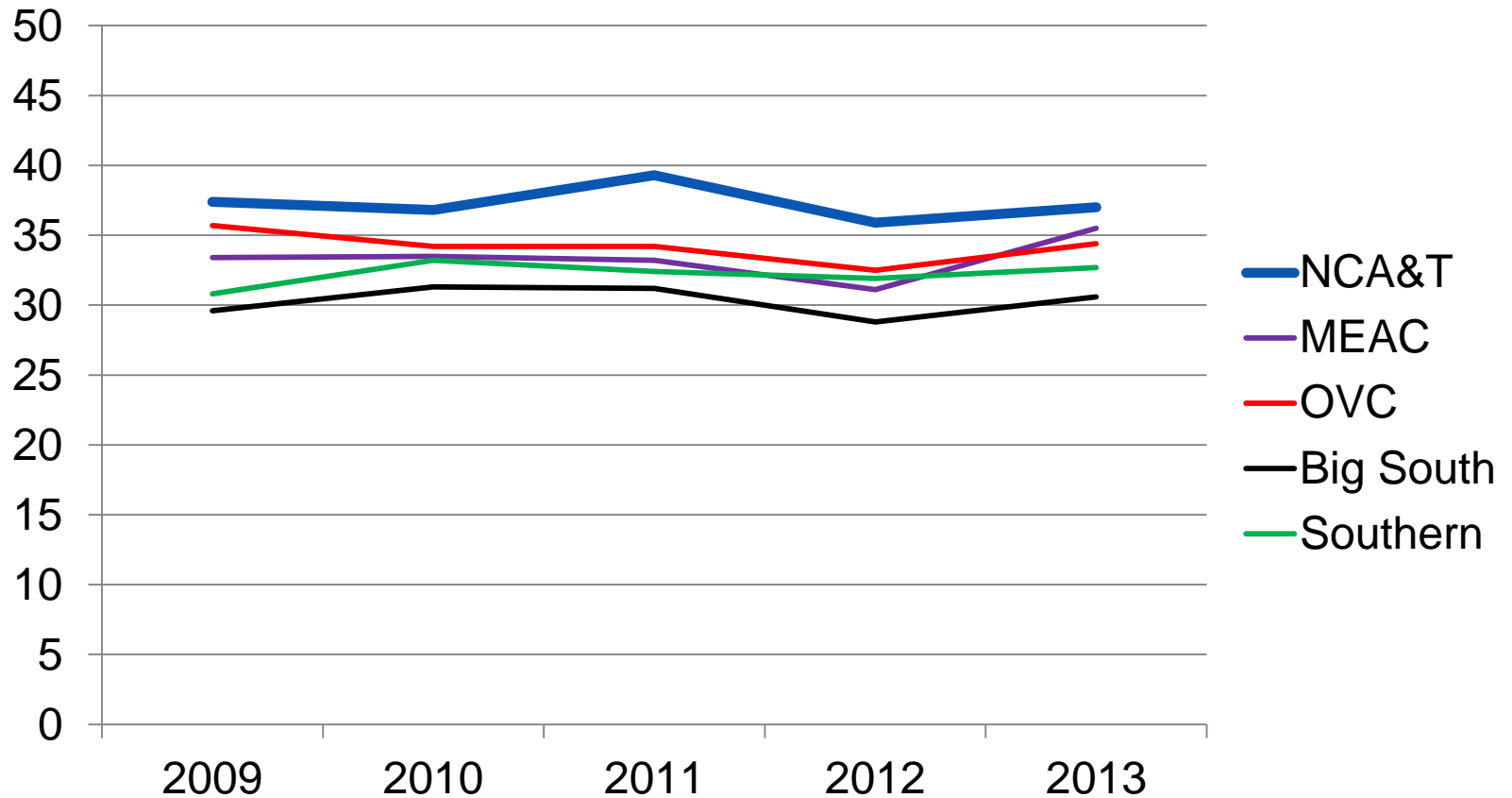


## Earned v. Allocated Revenue (%)





## Salaries and Benefits (% of budget)







## Academic Integrity Regulations (700.6.1[R])

II. A – Requires A&T to identify and review any class section that appears to have a ‘cluster’ of enrolled student-athletes.

Definitions:

- Clustering – occurs when any group of student-athletes represents one-fourth or more of course enrollment in any class section.
- Flagged course – any class section that contains a student-athlete cluster.
- Irregularity – any flagged course in which the mean GPA of the enrolled student-athletes is statistically significantly different from the mean GPA of the enrolled non-student-athletes.



## Academic Integrity Review 2013-2014

Flagged Courses:	29
Fall 2013	6
Spring 2014	11
Summer 2014	12
Irregular Courses:	19
Fall 2013	3
Spring 2014	6
Summer 2014	10
Irregular courses where the SA mean GPA exceeded the non-SA mean GPA	8

