

Academic Restructuring and Program Analysis

Board of Trustees Retreat

Joe B. Whitehead, Jr.

July 10, 2015



North Carolina Agricultural and Technical State University



Rationale for Restructuring and Realignment of Academic Affairs

- To examine configurations that enhance visibility and strengthens academic programs
- To examine configurations that enhance synergy and collaboration both in curriculum and in research
- To examine configurations that provide faculty more opportunity for innovative teaching, research, and engagement
- To examine configurations that provide effective and efficient use of academic resources



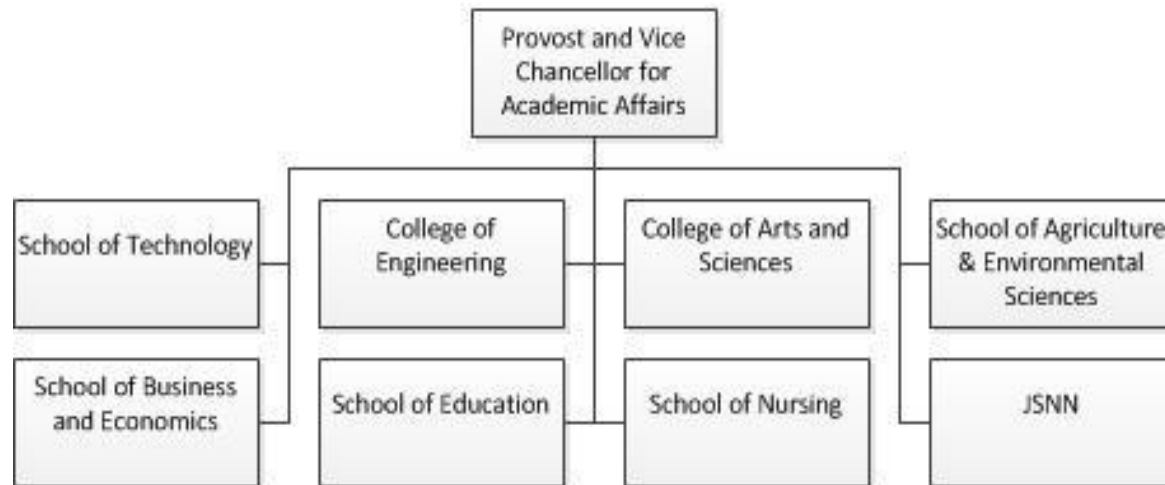
Restructuring, why now?

- To enhance the quality of faculty through strategic hiring
- To preparation for succession planning due to the volume of faculty and staff eligible to retire
- To assess the financial efficiency of multiple structures as a result of current and projected economic indicators

Overall, to establish the best structure to reach the goals of a preeminent land-grant university, *A&T Preeminence 2020*.



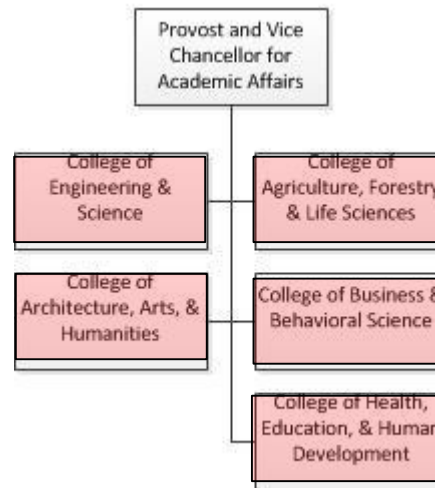
Current College/School Structure for North Carolina A&T State University



Note: Graduate, Honors, University, and General Colleges are not shown for simplicity



Current College/School Structure for Clemson University

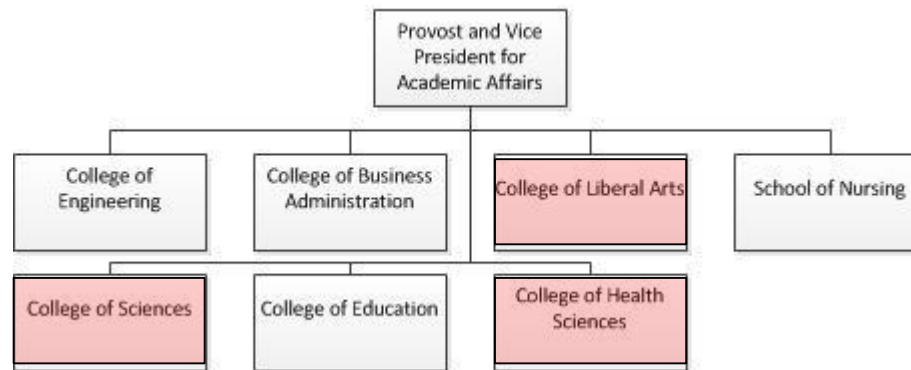


Research Universities (high research activity)
Enrollment: Over 19,000

Note: Graduate, Honors, University, and General Colleges are not shown for simplicity



Current College/School Structure for University of Texas at El Paso

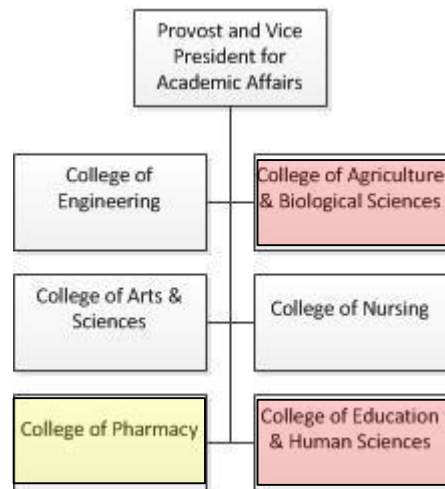


Research Universities (high research activity)
Enrollment: Over 21,000

Note: Graduate, Honors, University, and General Colleges are not shown for simplicity



Current College/School Structure for South Dakota State University

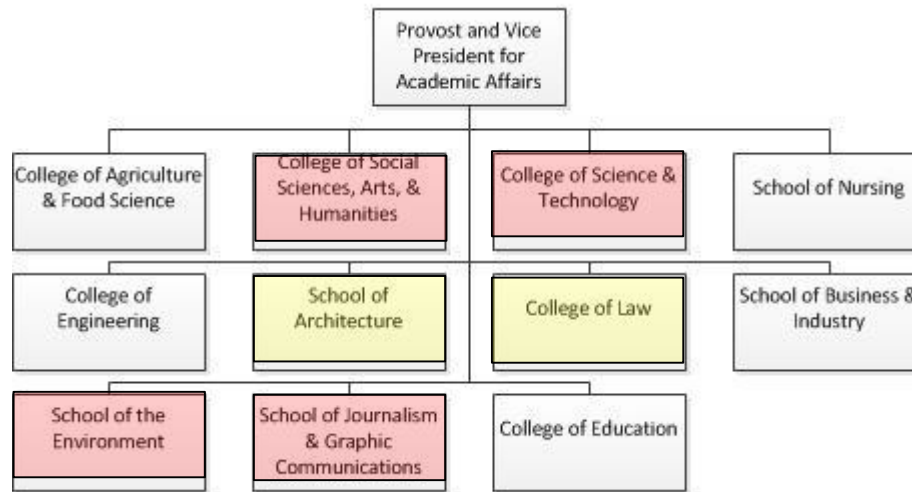


Research Universities (high research activity)
Enrollment: Over 12,000

Note: Graduate, Honors, University, and General Colleges are not shown for simplicity



College/School Structure for Florida Agricultural and Mechanical University

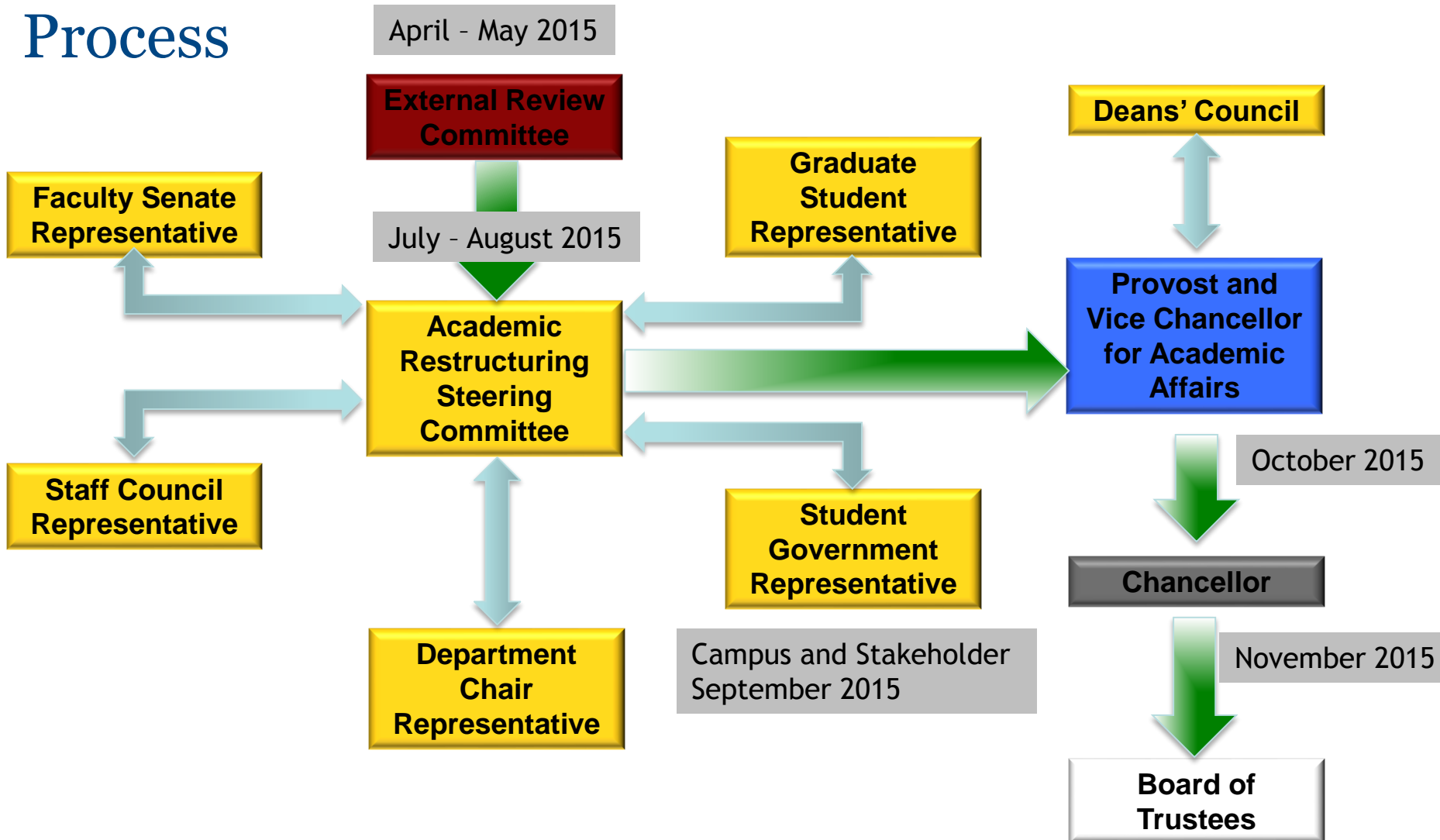


Doctoral/Research University
Enrollment: Over 12,000

Note: Graduate, Honors, University, and General Colleges are not shown for simplicity



Process





Questions?

