



**NORTH CAROLINA AGRICULTURAL
AND TECHNICAL STATE UNIVERSITY**

RESEARCH MISCONDUCT POLICY

Sanjiv Sarin

Vice Provost for Graduate, Research and Extended Learning

April 27, 2018


Board of Trustees | University Affairs Committee

AGGIES **DO**

Applicability

- Faculty
- Staff
- Students (UG and G)
- Post Docs, Research Associates

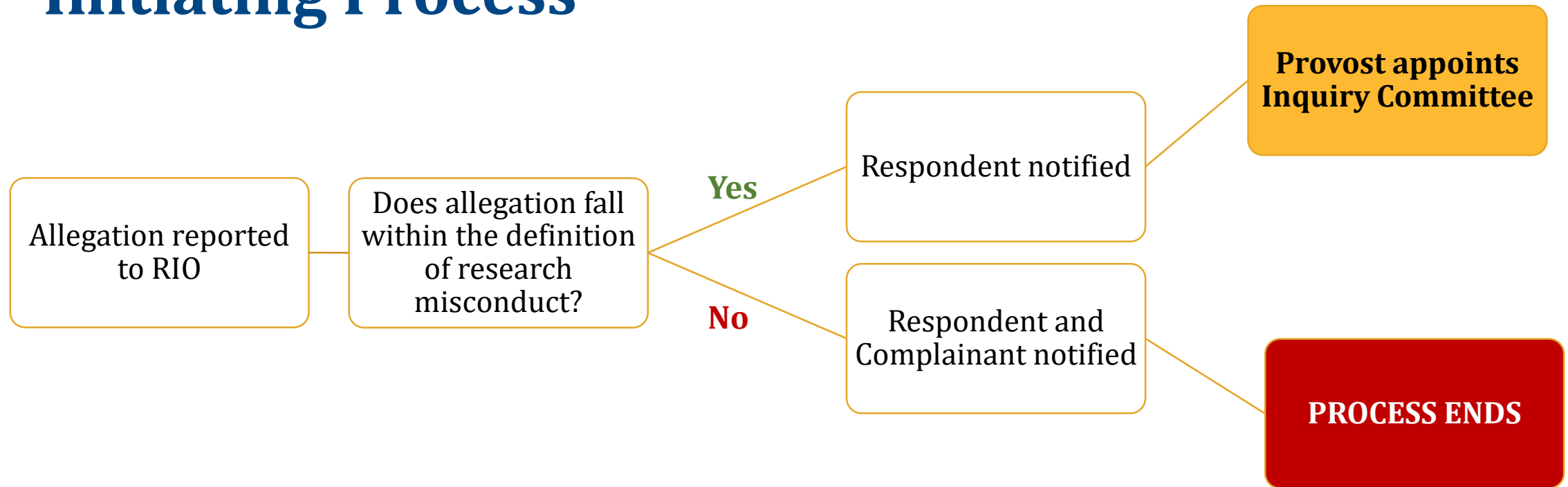
Research Misconduct

- Fabrication
 - Falsification
 - Plagiarism
- 
- Proposals
 - Conduct
 - Reporting

Key Officers

- Research Integrity Officer (RIO)
- Provost
- Legal Counsel
- Vice Chancellor for Research and Economic Development

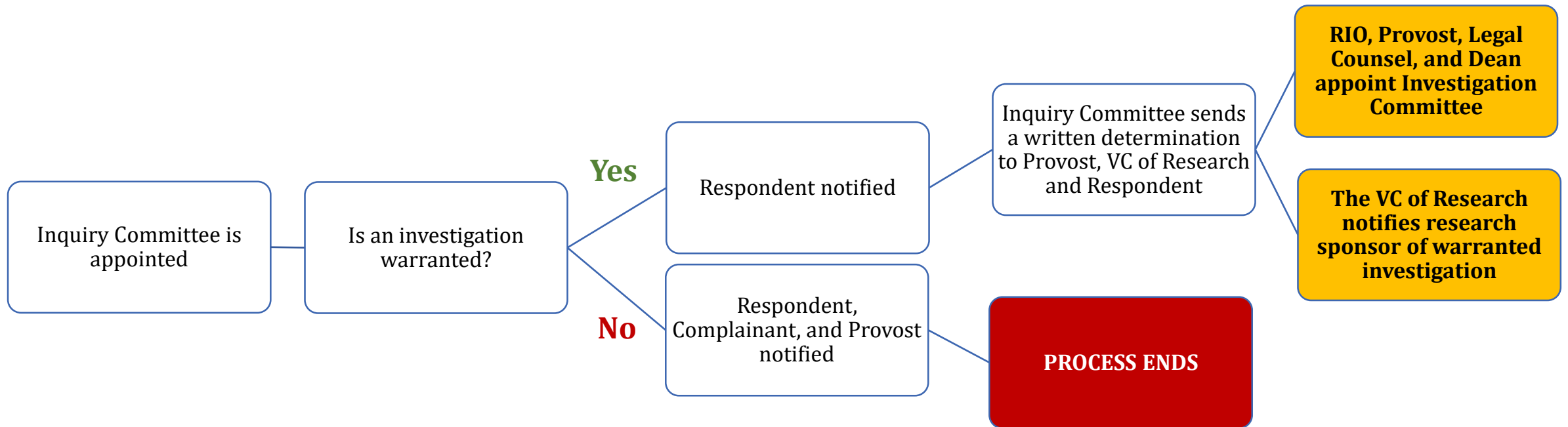
Initiating Process



Inquiry Committee

- At least three members
 - » No personal, financial, or professional conflict of interest
- **Only** responsible for determining if there is sufficient evidence to warrant an investigation
- Must complete process within 60 calendar days of its initiation

Inquiry Process



Investigation Committee

- At least five voting members who are senior University faculty with appropriate expertise
 - » No personal, financial, or professional conflict of interest
- Respondent can request replacement of committee member on reasonable showing of potential bias/conflict of interest
- Investigative process must begin within 30 days of inquiry determination
- Process must be completed within 120 days of its beginning

Investigation Process

Investigation Committee reviews Inquiry Report and investigates the allegation

A hearing is held with all involved parties

A written report of findings is drafted and sent to RIO. Respondent given chance to comment on draft.

RIO forwards final investigation report to Provost

Provost reviews and issues a written determination and specific actions to be taken

VC of Research will send final determination to funding agency, if applicable

Sanctions

- Correct research records
- Reprimand
- Suspension/termination of research award
- Additional RCR training
- Oversight by senior investigator
- Debarment
- Warning, demotion, salary reduction, dismissal
- If criminal activity, reporting to appropriate agency