

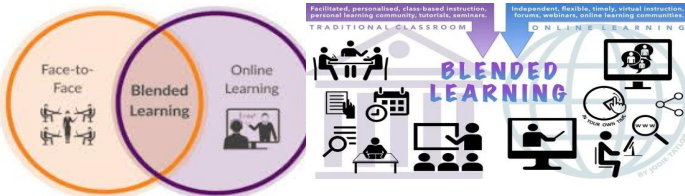
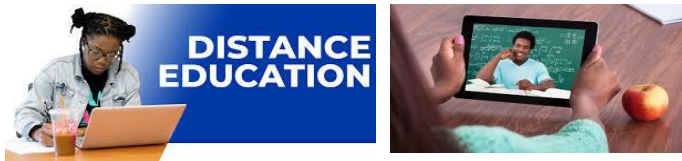
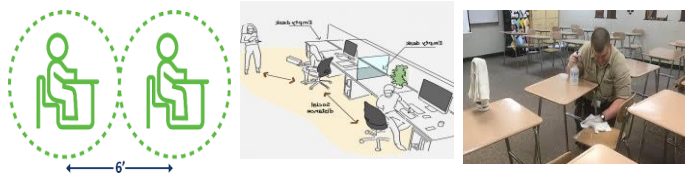
# COURSE DELIVERY AND INSTRUCTION



Beryl C. McEwen  
Provost and Executive Vice Chancellor, Academic Affairs

Board of Trustees Meeting  
06/18/2020

# Delivery Modes:

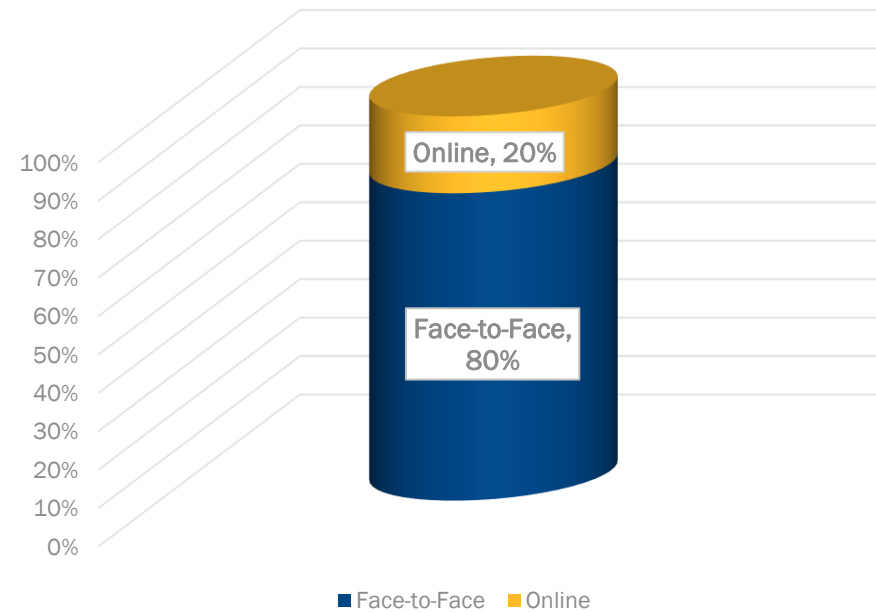


Face-to-Face

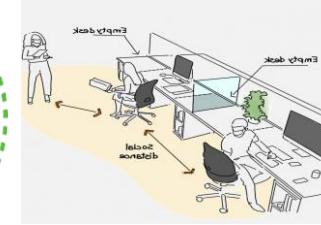
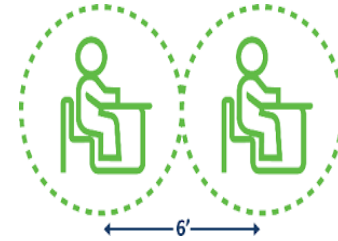
Online

Blended

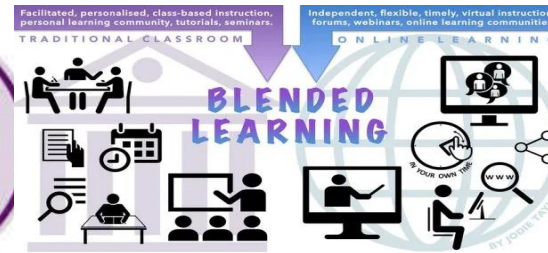
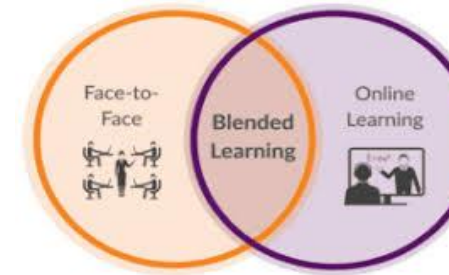
Desired Learning Mode  
(N=5,700)



- **Face-to-Face** (on campus)
  - Smaller class sizes for physical distancing (33%).
  - Approximately 44% of our course sections (1,336) will be offered on campus.
  - Students and faculty will be required to wear masks.



- **Blended Schedule**
  - Blend of face-to-face and online courses on students' schedules.
  - Access to professors at least once per week.
  - Both synchronous and asynchronous learning.



- **Fully Online/Distance Education**
  - Approximately 56% (1682) course sections will be offered online.
  - Traditional distance education courses.
  - All teaching and learning online.



## Continuing preparations:

- Running simulations to determine the final course schedule, with constraints of 30% capacity for classroom and lab usage and more time between classes.
- Preparing learning environment for behavioral alignment with CDC guidelines
  - Physical distancing
  - Face coverings
  - Daily deep cleaning by house-keeping staff, and touch-up as desired by students/faculty.
- Continuously emphasizing university core value—**RESPONSIBILITY**.
- Faculty being prepared to teach rigorous, highly engaging courses online (about 18% teaching online only—approved by HR).
- Students being prepare to learn online.
- Redesigning most social and enrichment activities as well as academic and student support services for the virtual space.