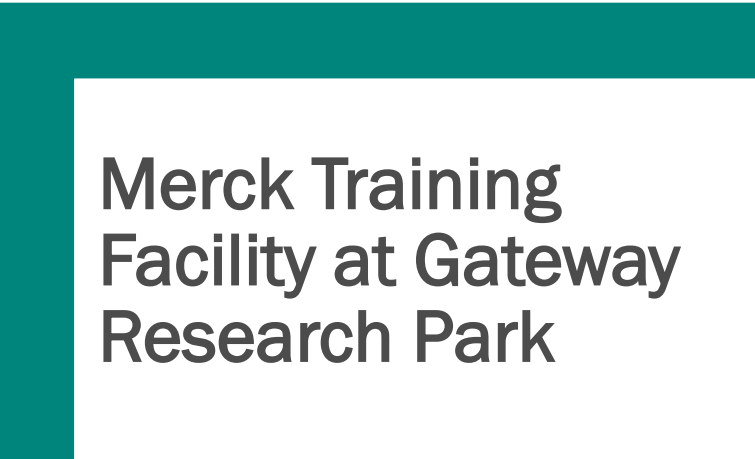


Merck Partnership Update

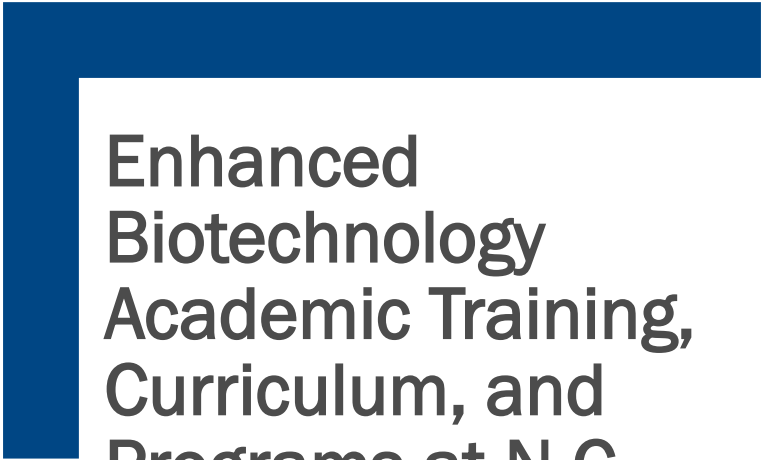
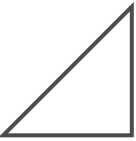


Rosalind Dale, Vice Provost for
Engagement and Outreach

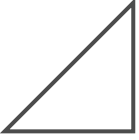
BOT Meeting | February 23, 2024



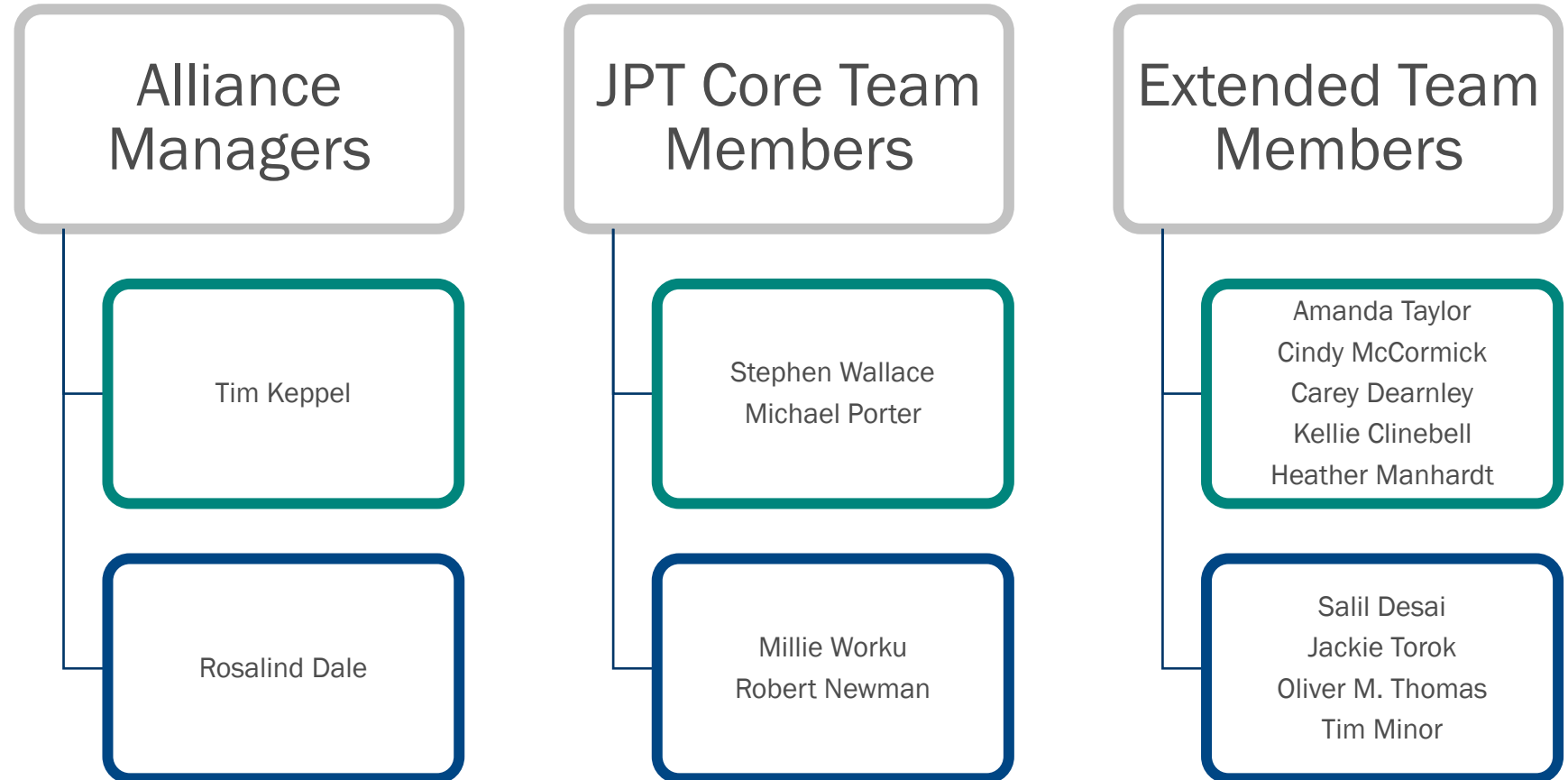
Merck Training
Facility at Gateway
Research Park

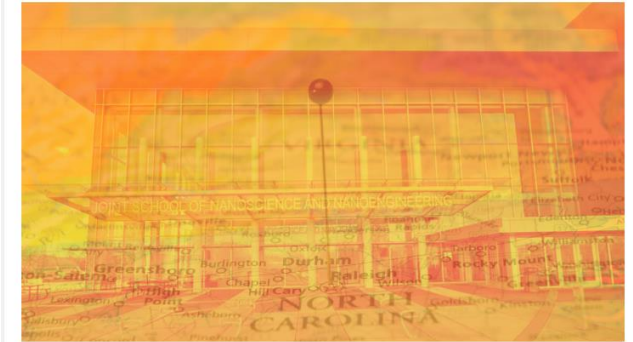
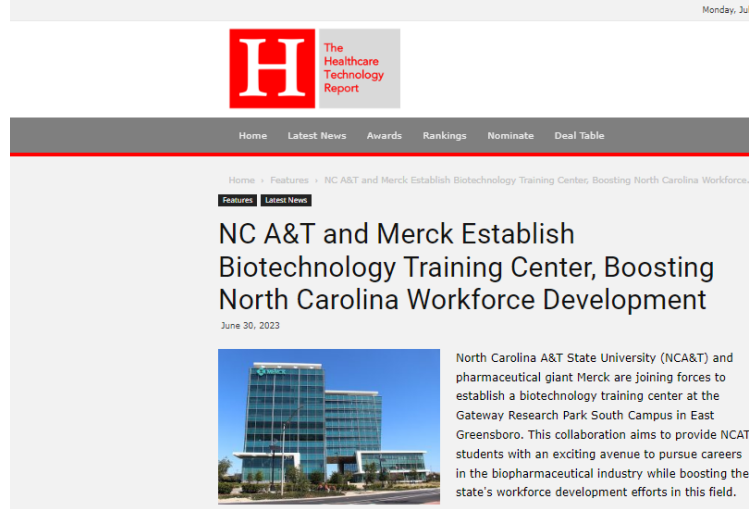


Enhanced
Biotechnology
Academic Training,
Curriculum, and
Programs at N.C.
A&T, CC, and HS



Development of a
State-of-the-Art
Training,
Manufacturing, and
Research Facility
(BTEC West)*

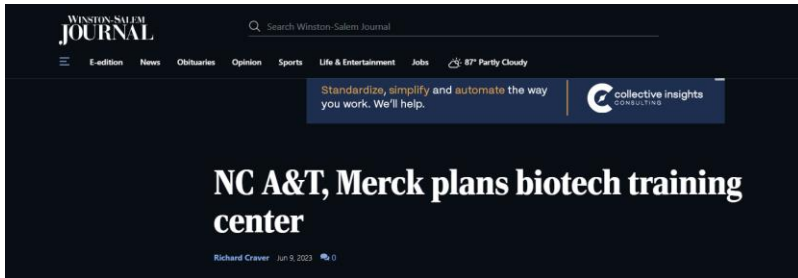




Merck Partners with NCA&T for New N.C. Biotechnology Training Center

By Alex Keown

June 21, 2023



Merck, NC A&T to Establish Biotech Training Center at Gateway Research Park

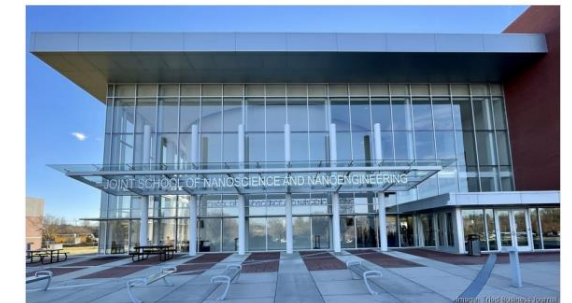
Drug giant Merck, NC A&T to launch biotech training center

North Carolina Agricultural and Technical State University and Merck have announced a collaboration agreement for Merck to build a biotechnology training center at Gateway Research Park's South Campus in East Greensboro.



Education

N.C. A&T, Merck to establish a biotech training center at Gateway Research Park in Greensboro



North Carolina A&T is bringing another expansion to Gateway Research Park with a partnership with leading pharmaceutical company Merck.

LILLIAN JOHNSON

By Lillian Johnson – Reporter, Triad Business Journal
Jun 8, 2023 Updated Jun 8, 2023 5:39pm EDT

MERCK TRAINING CENTER UPDATE

Gateway Park Research Center



- Punch list, final inspection, and closeout are scheduled to be completed 1Q2024
- Samet has received the certificate of occupancy
- Process laboratory equipment has been installed
- Facility will be ready for Merck by mid-February
- Facility Name
 - > Proposal from Merck: Merck and N.C. A&T Learning Center
 - > Internal Discussion

N.C. A&T BIOTECH PROGRAMS (CURRENT)

- Biotech Certificate (Dr. Millie Worku)
 - > 18-credit hour interdisciplinary undergraduate certificate (9 core/9 elective)
 - > Credits can be used toward the completion of degrees
 - Animal Sciences, Food and Nutritional Sciences, Natural Resources and Environmental Design, Horticulture, Chemistry, Biology, and Chemical Engineering
 - > Interdisciplinary elective courses are selected by students in consultation with their academic advisor

- DOD Center of Excellence in Biotechnology (Dr. Robert Newman)
 - > Collaboration with the Wake Forest Institute of Regenerative Medicine (WFIRM)
 - > Research and training opportunities for students (11 GR / 32 UG in BSP)
 - > Biotech Scholars Program (BSP) students represent diverse disciplines, including students majoring in Biology, Bioengineering, Chemistry, Chemical Engineering, and Psychology

MOVING FORWARD...

Collaboration ideas

- Members of both institutions identified opportunities for collaboration. These included:
 - > Merck scientists/engineers to make speaking events at A&T
 - > A&T faculty building relationships with the Durham manufacturing site leadership
 - > Undergraduate and faculty research opportunities with Merck scientists/engineers in human health and animal health
 - > Opportunities for the training facility to support A&T certificate programs
 - > Symposium at A&T (including networking event)

FACILITY OPENING...

Gateway Park Research Center



- **Preview Event | March 26th @ 9:00 a.m.**
 - > Briefing, facility tour
 - > Limited guests: elected officials (local, county & state); BOT and BOG Chairs, A&T and Merck leaders
- **Launch Event | April 19th @ 9:00 a.m.**
 - > Briefing, facility tour
 - > Open to a larger audience

Questions?